



PARTS CATALOG PROHEAT X45



TABLE OF CONTENTS

A. SAFETY	A-1
B. SELECTION GUIDE	B-1
BLOWER	
Blower, 12V	1
Blower, 24V	1
COMPRESSOR	
Air Filter	4
Compressor, 12V	4
Compressor, 24V	4
Mounting Clamps	4
Compressor Rebuild Kit	6
Compressor Diaphragm Kit	6
COOLANT PUMPS	
Coolant Pump, 12V	4
Coolant Pump, 24V	4
Coolant Pump Rebuild Kit	5
ELECTRICAL SYSTEM	
PCM	3, 7
Fuse, 15 amp	3
Fuse Holder	3
Power wire Harness	
Main Wire Harness	3
Sleeper Wire Harness	3
Switch Wire Harness	3
EXHAUST SYSTEM	
Exhaust Pipe, 10" Long	2
Exhaust Pipe 90° Elbow	2
Exhaust Pipe Clamp	2
FUEL SYSTEM	
Nozzle	1
Fuel Regulator	1
Fuel Pickup	9
Fuel Pump	4
HEAT EXCHANGER	
Sight Glass Assy Kit	1
Combustion Tube	2
Heat Exchanger	2
Rubber Shock Mounts	2, 12
IGNITION SYSTEM	
Ignition Electrode	1
Ignition Lead with Boot	1
Ignition Coil	2

TABLE OF CONTENTS CONTINUED

SENSORS

Flame Sensor	1
Overheat Sensor	3
Temperature Sensor	3

TEST EQUIPMENT & SPECIAL TOOLS

Test Lead, Main Harness	16
Remote ON/OFF Switch	16
Datalink Kit	17
Flow Indicator	18
Test Gauge, Air Compressor	19

ACCESSORIES

Fuel Pickup	9
Bunk Thermostat	10
Isolator	10
ON/OFF Switch	10
Relay	10
Enclosure	11
Rubber Mount Kit	12
Mount Upgrade Kit	12
Auxiliary Base Kit	12
Side Frame Mounting Kit	13
Across Frame Mounting Kit	14
Timer, 7 Day Digital	15
Ground Wire In-line Fuse	15
Air Inlet Hose	15
Impact Switch	15

DOCUMENTATION

Proheat Installation Manual	20
Proheat Warranty Card	20
Proheat Parts Catalog	20

SERVICE KITS

Fall Tune-Up Kit	8
Major Service Kit	8

NUMERIC PARTS INDEX	21
----------------------------------	----

A. SAFETY

Throughout this manual, you will see notes labeled **DANGER**, **WARNING**, **CAUTION**, and **NOTICE** to alert you to special instructions or precautions concerning a particular procedure that would be hazardous if performed incorrectly or carelessly.

Observe them carefully!

These safety alerts alone cannot eliminate all hazards. Strict compliance with these special instructions and common sense are major accident prevention measures.

⚠ DANGER

Immediate hazards that will result in severe injury or death.

⚠ WARNING

Hazards or unsafe practices that could result in severe personal injury or death.

⚠ CAUTION

Hazards or unsafe practices that could result in minor injury or product or property damage.

NOTICE

Information that is important to proper installation or maintenance, but is not hazard-related.

SAFETY CONSIDERATIONS

⚠ WARNING

Exhaust

Inhalation of exhaust gas (containing carbon monoxide) may cause severe personal injury and/or death. Anyone suspected of suffering from CO inhalation should be removed from the hazardous area and given medical assistance immediately.

⚠ WARNING

Explosion Hazard

Do not operate heater where combustible fumes or airborne particles, such as sawdust, are present.

⚠ WARNING

Fuel

Exercise extreme caution when working near fuel or fuel-filled equipment. Do not operate heater during fueling operations. In addition, do not smoke or handle open flame equipment, such as a blowtorch, around fuel.

⚠ WARNING

Fire Hazard

Do not place any flammable items around the heater and exhaust pipe.

⚠ WARNING

Batteries

Wear hand and eye protection when working near batteries. Do not smoke or use open flames near batteries.

⚠ WARNING

Electrical

Electric shock can cause severe personal injury, burns, and death. Before working on any unit, disconnect the batteries. Use only approved materials and methods when working on the electrical system and follow local electrical codes. Never work with electricity in wet conditions or when you are feeling fatigued.

⚠ WARNING

Poisons/Toxins

Fuel and coolant are toxic and in some cases, carcinogenic. Wear eye and hand protection at all times. Remove contaminated clothing immediately and wash contaminated skin. Do not breathe in vapors.

⚠ WARNING

Moving/Hot Parts

Moving parts can cause severe injury and or death. Before working on any unit, shut it off. Do not operate any unit until protective covers have been replaced. Always ensure bolts and clamps are correctly torqued and secured. Inspect mechanical components periodically for damage and corrosion.

⚠ WARNING

Coolant

Never remove the filler cap when the engine is hot – escaping steam or scalding water could cause serious personal injury. The coolant level in the expansion tank should be checked at least weekly (more frequently in high mileage or arduous conditions). Always check the level *when the system is cold*. Unscrew the filler cap slowly, allowing the pressure to escape before removing completely. *Never* run the engine without coolant.

Prevent anti-freeze coming in contact with the skin or eyes. If this occurs, rinse immediately with plenty of water. Anti-freeze will damage painted surfaces.

Never top-up with salt water. Even when travelling in territories where the water supply contains salt, always ensure you carry a supply of fresh (rain or distilled) water.

⚠ DANGER

California Proposition 65 Warning

Do not operate heater in garages or in other closed or unventilated areas.

Diesel exhaust and some of its constituents are known to the State of California to cause cancer, birth defects, and other reproductive harm.

Electrical components in this product may contain lead, a chemical known to the State of California to cause cancer and birth defects and other reproductive harm.

B. SELECTION GUIDE

Heat output 45,000 BTU/Hr (13.0kW)



This selection guide is designed to help you choose the appropriate PROHEAT kit for your application.

For further information, visit our web site at www.proheat.com

Standard Heater Kit For Engine Heat

PH0403	12 Volt Standard Heater Kit	
PH0404	24 Volt Standard Heater Kit	
Kits Contain:		
	Basic Heater	PH0405 or PH0406
	Aluminum enclosure box, checker	PK0200
	Installation kit	PK0300 or PK0301

Heavy Equipment Heater Kit For Engine Heat

PH0407C	12 Volt AUX Input Heater Kit	
Kits Contain:		
	Basic Heater with AUX input	
	PCM AUX input harness	903026K
	Aluminum enclosure box, plain	PK0202
	Installation kit	PK0300
PH0406C	24 Volt AUX Input Heater Kit	
Kit Contains:		
	Basic Heater with AUX input	
	PCM AUX input harness	903026K
	Aluminum enclosure box, plain	PK0202
	Installation kit	PK0301

Truck Heater Kit for Engine And Sleeper Heat

PH0401	12 Volt Truck Heater Kit	
Kit Contains:		
	Basic Heater	PH0405
	Aluminum enclosure box, checker	PK0200
	Sleeper control kit (c/w thermostat)	PK0050
	Installation Kit	PK0300
PK0360	Power Smart Kit	
Kit Contains:		
	Auxiliary heat exchanger with single speed fan for sleeper heat.	
	Coolant hose Y adapters.	

Basic Heater Without Aluminum Enclosure Box

PH0405	12 Volt Basic Heater Kit (requires PK0300)	
PH0406	24 Volt Basic Heater Kit (requires PK0301)	
Basic Kit Contains:		
	Electronic Controller	12 Volt 999100K 24 Volt 999400K
	Coolant Pump	940326K 942820K
	Mounting Base	953346K 953346K

Installation Kit

PK0300	Installation Kit (for PH0405) 12V	
PK0301	Installation Kit (for PH0406) 24V	
Installation Kit Contains:		
	Power wire harness	12 Volt 903223K 24 Volt 903223K
	Fuel pick-up and hose	814027K 814027K
	Toggle switch	920125K 842725K
	Exhaust Nuts, bolts, washers for mounting	845028K 845028K

Options

PK0001-1	T-II Timer, 7 Day Digital
PK0050	Sleeper control kit (c/w thermostat)
PK0051	Hour meter kit
PK0053-2	Data Link kit for G-II PCM
PK0053-3	Data Link Kit for G-III PCM
PK0055	Impact switch kit (for Bus installations)
PK0151	Across-frame mounting kit
PK0152	Side-frame mounting kit
PK0200	Aluminum enclosure box, checker
PK0202	Aluminum enclosure box, plain
PK0300	Basic installation kit, 12 Volt
PK0301	Basic installation kit, 24 volt

XL Series Conversion Kits

956812K	XL900 to X45 – 12 Volt
968532K	XL900 to X45 – 24 Volt
200449K	XL1500 to X45 – 12 Volt
969174K	XL1500 to X45 – 24 Volt

Conversion Kits Include:

Combustion Tube
Fan/Blower
Compressor Fuel Pump
Necessary Harnesses

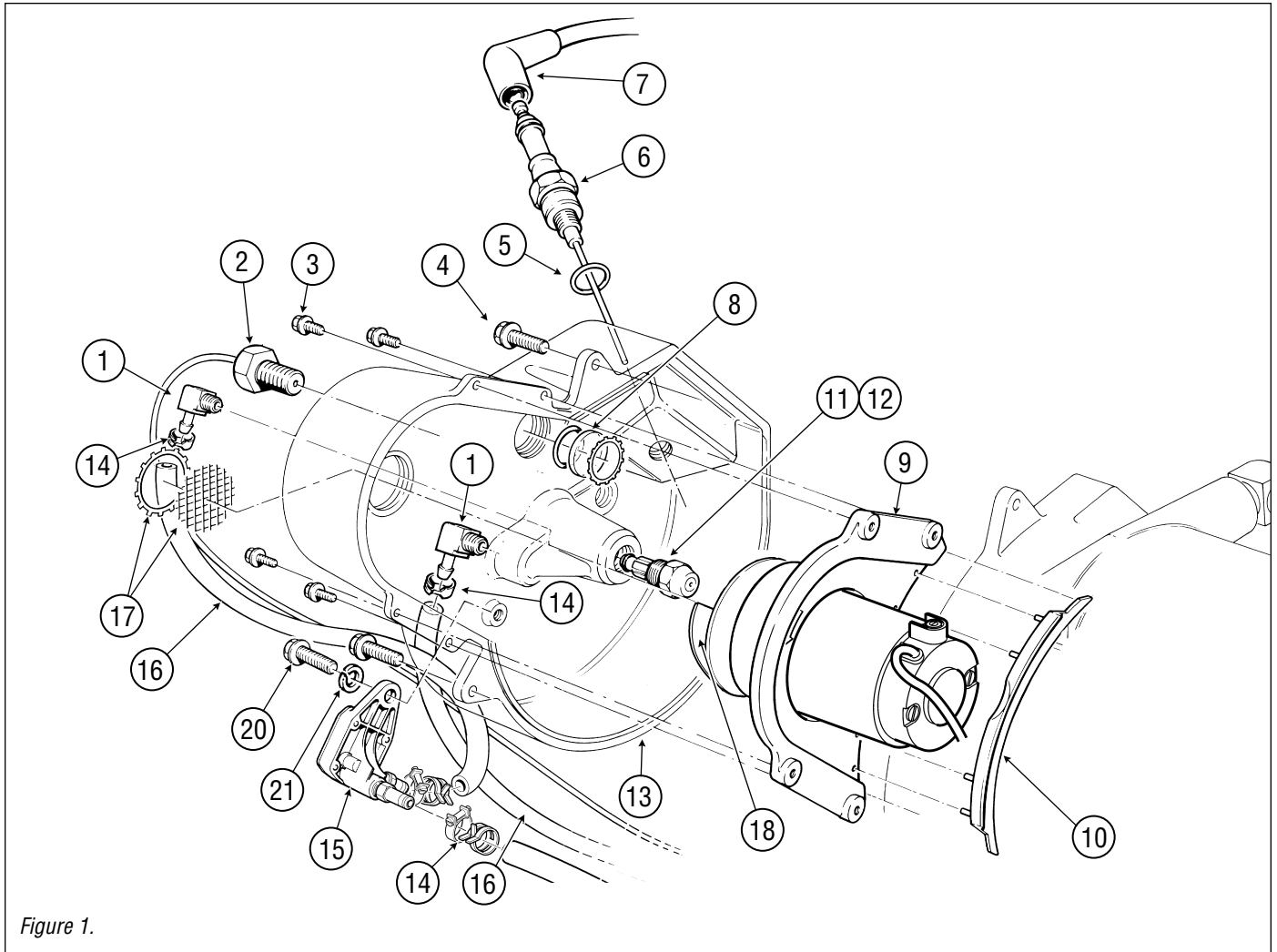


Figure 1.

ITEM	PART#	DESCRIPTION
1	842123K	Elbow, 3/8" Hose x 1/8" NPT, Air & Fuel
2	954329K	Sensor, Flame
3	934429K	Screw, 10-24 NC x 5/8" Hex HD (4/pkg.)
4	903628K	Screw, Hex Flange, 1/4" NC x 5/8" (12/pkg)
5	953523K	Gasket, Seat, Igniter
6	933525K	Igniter, X45 c/w Gasket
7	930523K	Lead, Ignition c/w coil boots <i>(not shown)</i>
8	844721K	Sight Glass Assy Kit
9	980212K	Blower, 12V c/w Gasket & Fan Blade
	980224K	Blower, 24V c/w Gasket & Fan Blade
10	964424K	Gasket, Blower
11	938326K	Nozzle, Fuel, 30609-32 c/w O-Ring
		Note: Always check part # on nozzle to ensure correct replacement part.
12	221442K	O-Ring, Nozzle
13	932100K	Fan End Casting (sub) c/w items 1, 8 & 17

ITEM	PART#	DESCRIPTION
14	880072K	Clamp, Spring, 1/4" (10/pkg)
		Note: 3/16" hose is an obsolete size. Please check your heater to ensure you are ordering the correct part.
	934325K	Clamp, Screw, 3/16" (2/pkg)
	840429K	Clamp Spring, Air Green 3/16"
15	951126K	Regulator, Fuel
16	842020K	Hose, Air & Fuel, 1/4" ID, per 5ft.
17	964321K	Screen, Blower Inlet Kit
18	900316K	Fan Blade c/w Glue
20	922525K	Screw, 1/4" NC x 7/8" SS (4/pkg)
21	029526K	Lockwasher, 1/4", SS (10/pkg)

HEAT EXCHANGER

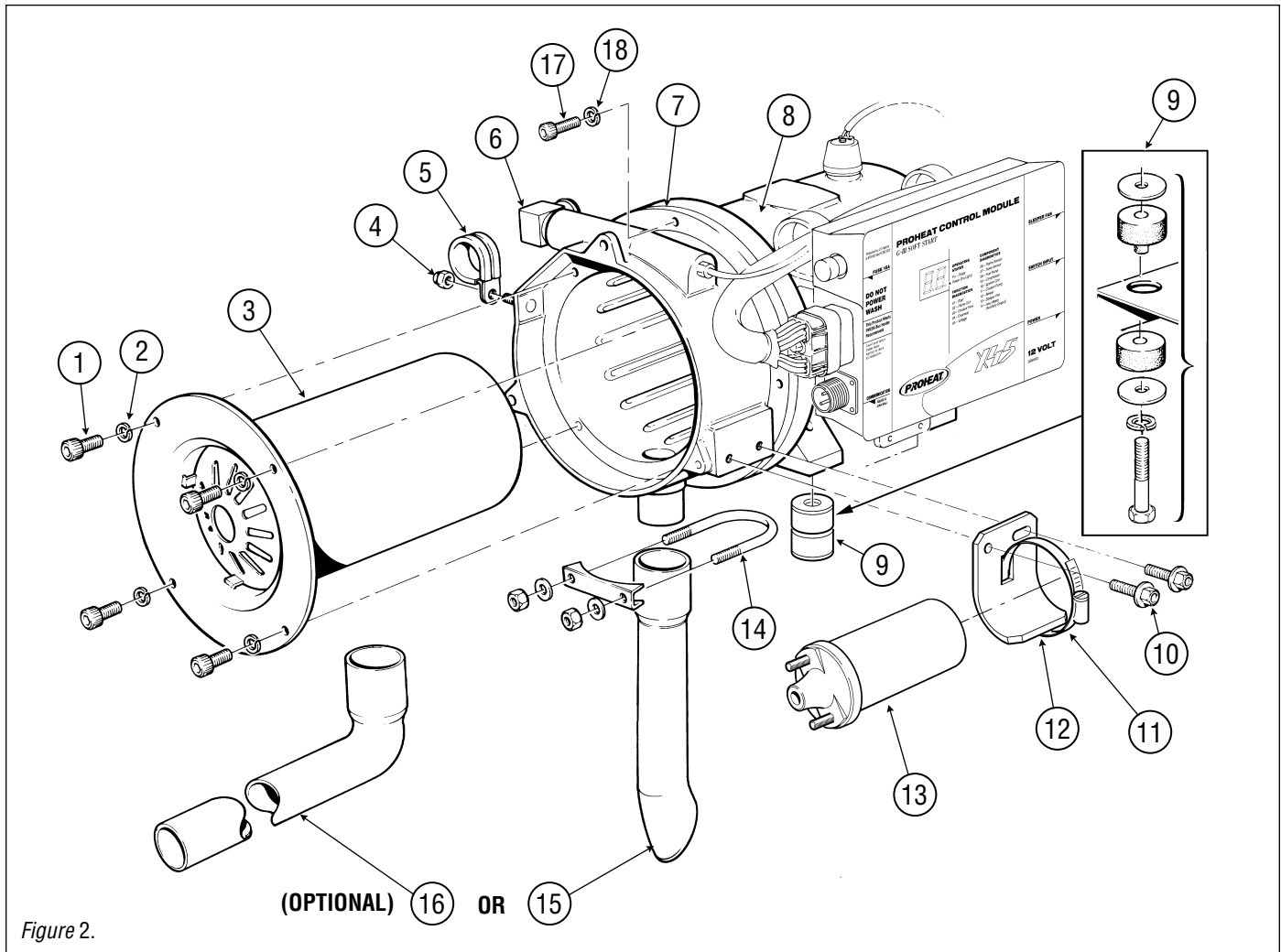


Figure 2.

ITEM	PART#	DESCRIPTION
1	999670K	Screw, 10-24 NC x 1/2", Socket SS (4/pkg)
2	020625K	Lockwasher, #10, SS (10/pkg)
3	844222K	Combustion Tube, X45
4	938928K	Nut, Nylon, 1/4" NC Jam (6/pkg)
5	936725K	Clamp, Cushioned 3/8" ID
6	904921K	Elbow, 3/4" Hose x 1/2" NPT
7	225527K	O-Ring, Heat Exchanger
8	934522K	Heat Exchanger c/w Elbows
9		Mounting Hardware (see page 12)
10	903628K	Screw, Hex Flange, 1/4" NC x 5/8" (12/pkg)
11	334423K	Clamp, Gear, #32
12	850113K	Bracket, "J" c/w Clamp
13	913526K	Coil, Ignition
14	909521K	Clamp, Exhaust Pipe

ITEM	PART#	DESCRIPTION
15	845028K	Exhaust Pipe, Straight, 10"
16	980521K	Exhaust Pipe, 90° Elbow, 24"
17	922525K	Screw, SHCS, 1/4" NC x 7/8" (4/pkg)
18	029526K	Lockwasher, 1/4", SS (10/pkg)

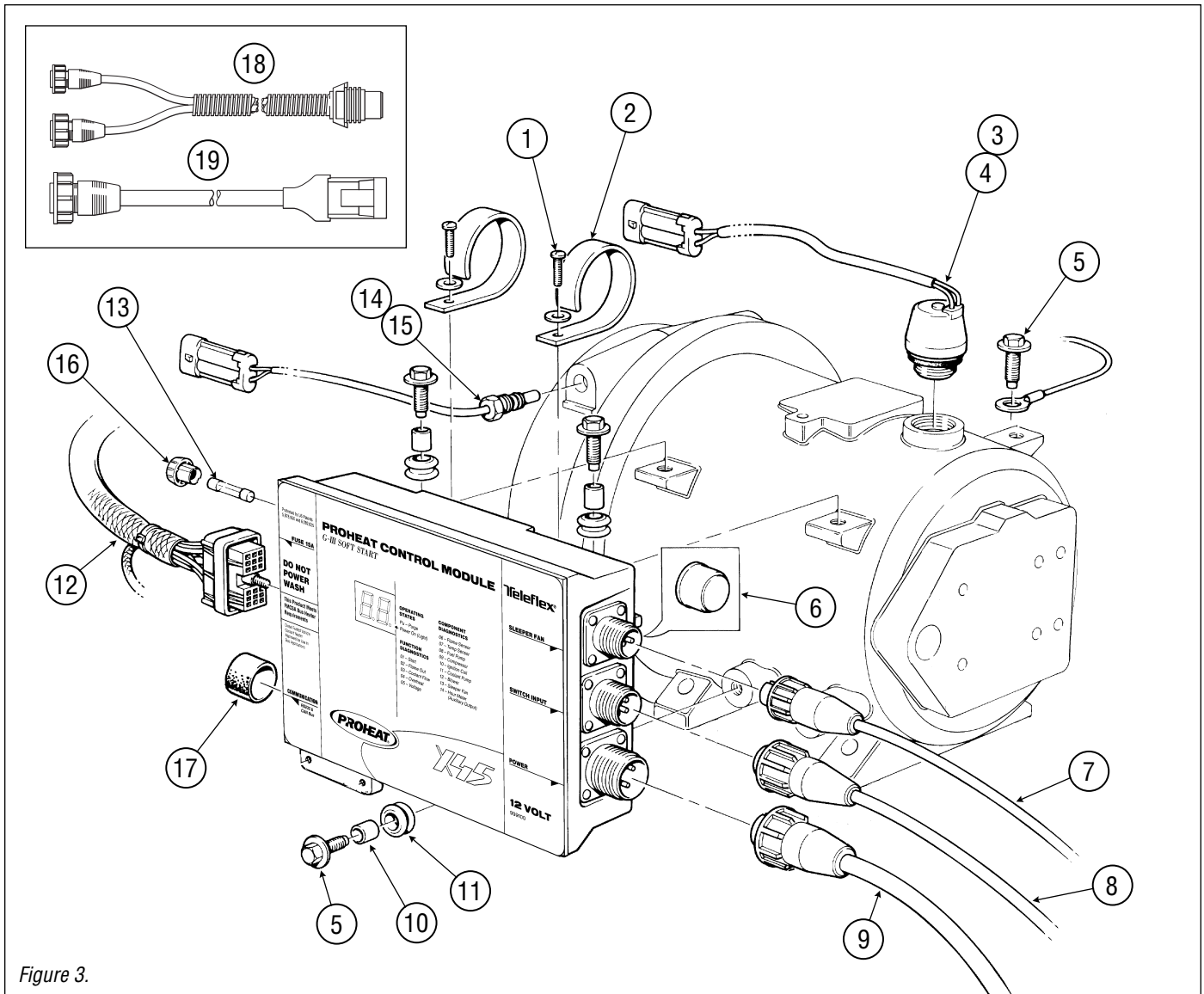


Figure 3.

ITEM	PART#	DESCRIPTION
1	934429K	Screw, 10-24 NC x 5/8" Hex HD (4/pkg)
2	934626K	Clip, Wire Harness (2/pkg)
3	901021K	Sensor, Overheat c/w O Ring
4	917724K	O-Ring, Overheat
5	903628K	Screw, Hex Flange, 1/4" NC x 5/8" (12/pkg)
6	931327K	Cap, Vinyl
7	903026K	Harness, Sleeper Fan, 30', 2 Pin
8	903120K	Harness, Switch, 25', 4 Pin
	986532K	Harness, Switch, 26", 4 Pin (<i>not shown</i>)
9	903223K	Harness, Power, 16', 3 Pin
	903224K	Harness, Power, 32', 3 Pin (<i>not shown</i>)
10	842528K	Spacer, Controller (3/pkg)
11	905229K	Grommet, Controller Mount (3/pkg)

ITEM	PART#	DESCRIPTION
12	934500K	Harness, Main Internal, 12V
	934520K	Harness, Main, 24V c/w Ground Fuse (<i>Can be used in 12V applications.</i>)
13	921823K	Fuse, 15A (3/pkg)
14	901124K	Sensor, Temperature c/w O-Ring
15	905821K	O-Ring, Temperature Sensor
16	900001K	Fuse Holder Replacement Kit
17	931325K	Cover, Connector, CANbus/RS232
18	985524K	Harness, Transit, Switch/AUX 26"
19	944628K	Harness, Transit, Power 26"

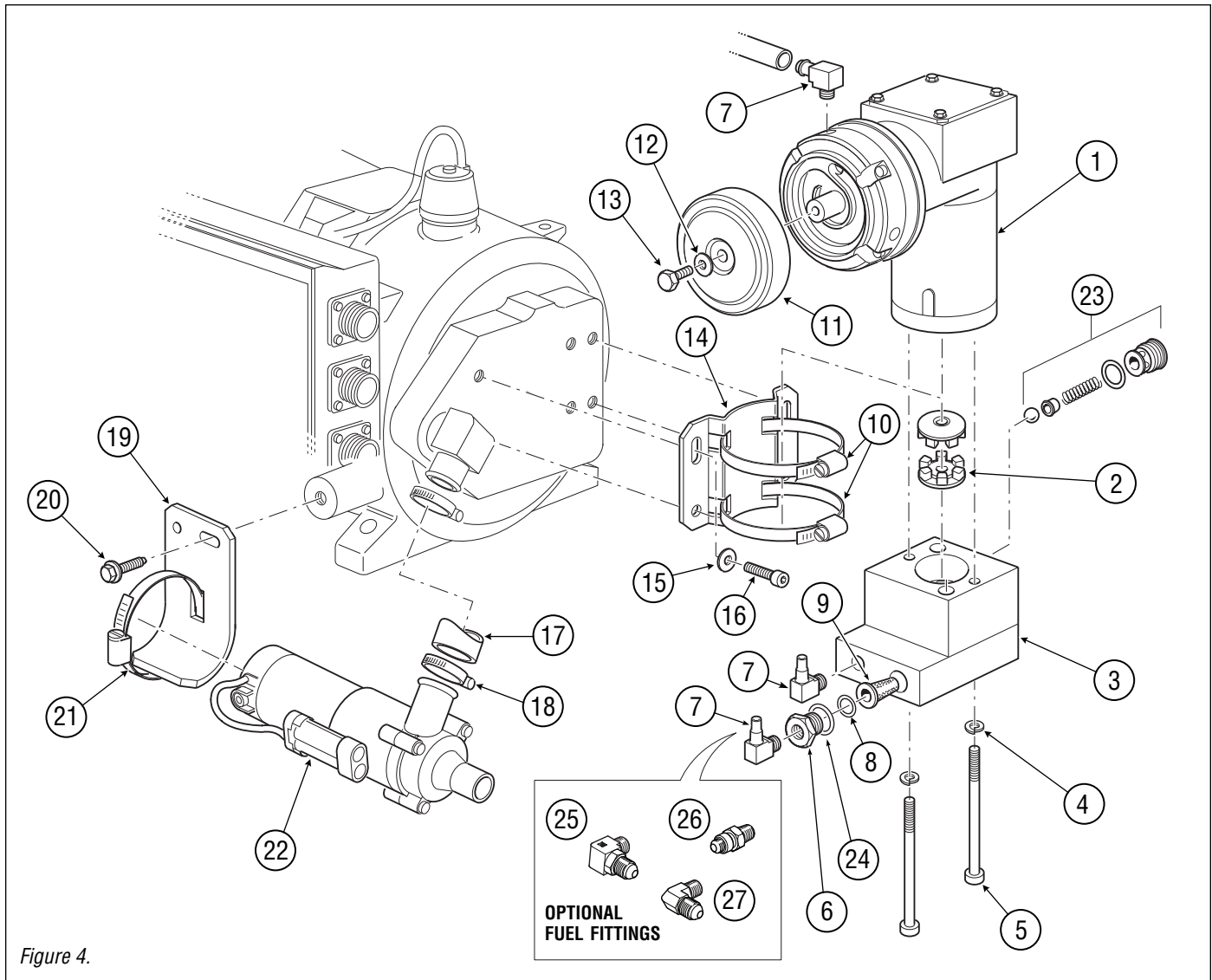


Figure 4.

ITEM	PART#	DESCRIPTION
1	930812K	Compressor, 12V
	930824K	Compressor, 24V
		<i>Compressor Rebuild Kit see page 6</i>
2	940732K	Coupling (2/pkg)
3	980012K	Fuel Pump c/w coupling & items 2, 4 to 9, 23 & 24
4	020625K	Lockwasher, #10, SS (10/pkg)
5	922680K	Screw, #10-24 x 2 1/2", SS (2/pkg)
6	880015K	Fitting, Filter Cap c/w O-Ring item 24
7	842123K	Elbow, 3/8" Hose x 1/8" NPT, Air & Fuel
8	014925K	O-Ring, Fuel Filter (2/pkg)
9	880035K	Filter, Fuel c/w item 8 & 24
10	331539K	Clamp, Gear #36 (1/pkg)
11	825730K	Filter, Compressor
12	254261K	Washer, Sealing, 685-002 (2/pkg)
13	922224K	Screw, 1/4NC x 1/2" (2/pkg)
14	212476K	Bracket, Compressor / Fuel Pump

ITEM	PART#	DESCRIPTION
15	029526K	Lockwasher, 1/4", SS (10/pkg)
16	950121K	Screw, 1/4"NC x 1/2" SS (4/pkg)
17	961229K	Hose, Coolant, 3/4" ID, 1 ft.
18	962823K	Clamp, Silicon Hose, #10
19	850113K	Bracket, "J" c/w Clamp
20	903628K	Screw, Hex Flange, 1/4" NC x 3/4" (12/pkg)
21	334423K	Clamp, Gear, #32
22	940326K	Coolant Pump, 12 Volt
	942820K	Coolant Pump, 24 Volt
		<i>Coolant Pump Rebuild Kit see page 5</i>
23	981324K	Relief Valve Kit
24	014427K	O-Ring, Fuel Fitting
25	285725K	Fitting, SAE 45° Flare Male – 1/8" Male NPT Elbow
26	859165K	Fitting, -4 JIC-M x 1/8 NPT-M STL
27	850217K	Fitting, -4 JIC Male – 1/8" Male NPT Elbow

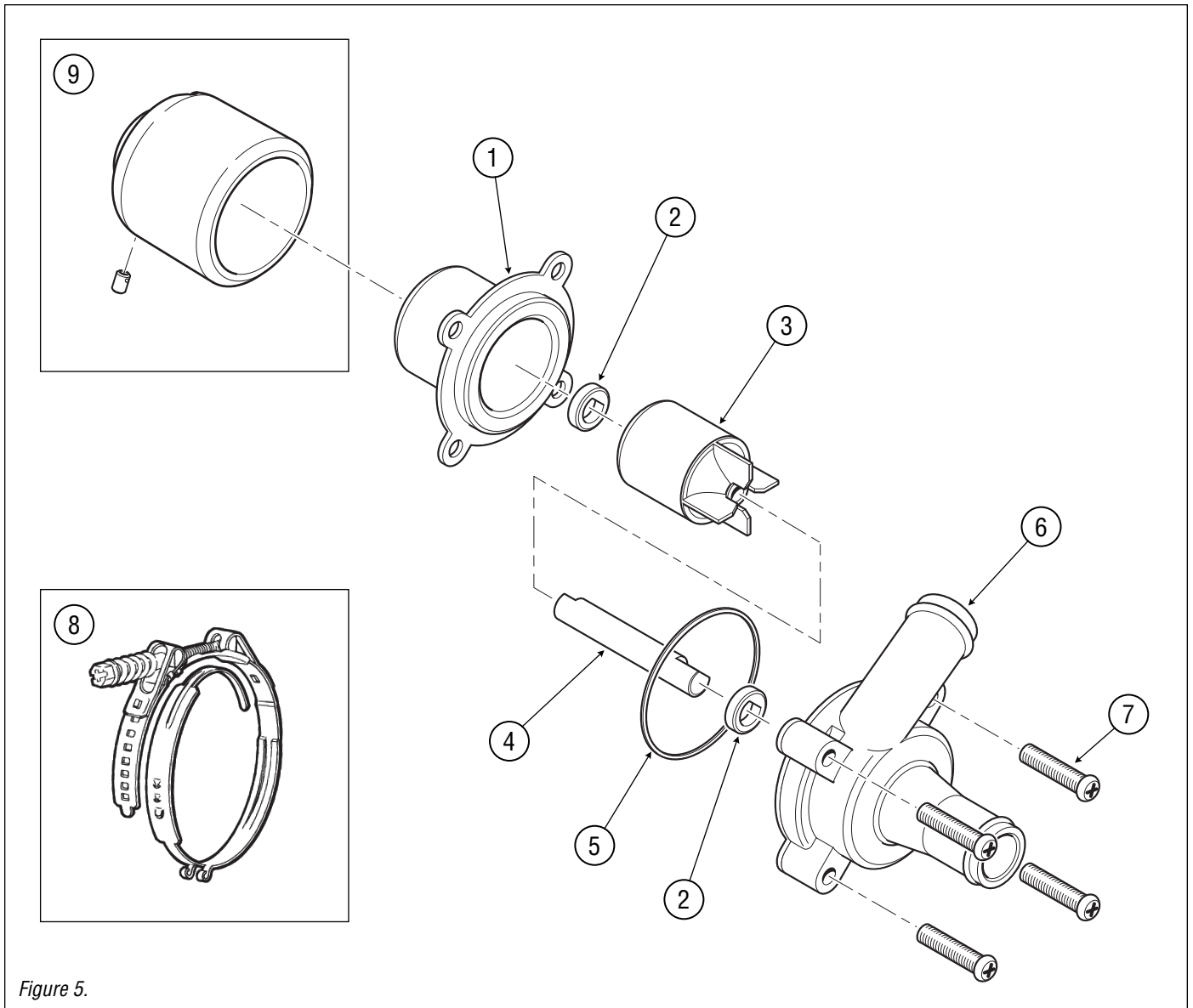


Figure 5.

ITEM	PART#	DESCRIPTION
	865893K	COOLANT PUMP REBUILD KIT
		Kit Contains:
1		Cup, Separator
2		Washer, Thrust
3		Magnet, Impeller
4		Shaft, Impeller
5		O-Ring
6		Pump Body
7		Fasteners

ITEM	PART#	DESCRIPTION
8	962823K	Clamp, Silicon Hose, #10
9	972726K	Coolant Pump Drive Cup w/set screw
10		Instructions, pump rebuild <i>(not shown)</i>
11		Instructions, hose clamp <i>(not shown)</i>

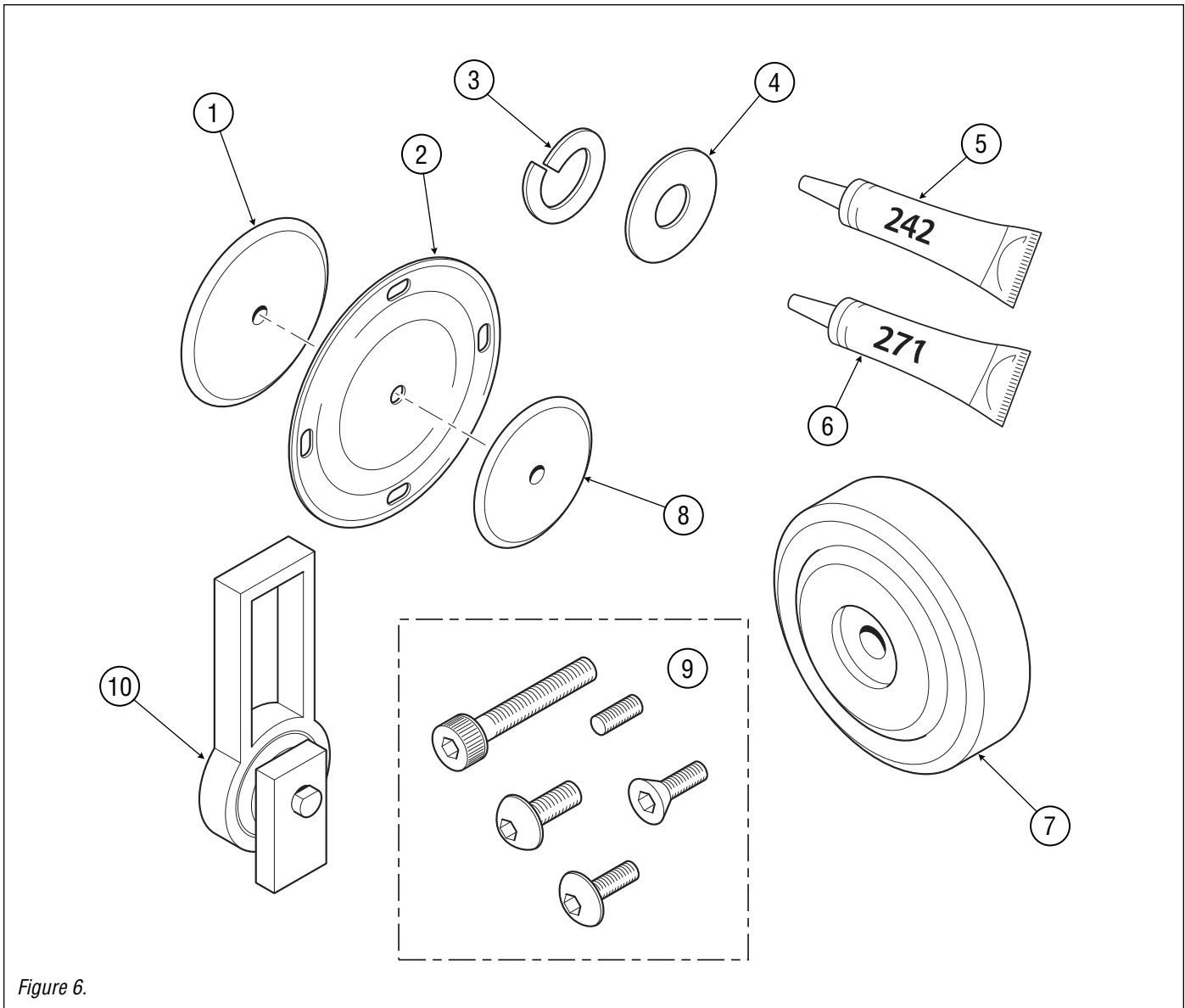


Figure 6.

ITEM	PART#	DESCRIPTION
	954685K	COMPRESSOR REBUILD KIT Kit Contains:
1		Disk, Compressor
2		Diaphragm, Compressor
3		Lockwasher, #10, SS
4		Washer, Sealing, 685-002
5		Loctite®, 242 (0.5 ml Tube)
6		Loctite®, 271 (0.5 ml Tube)
7		Filter, Compressor
8		Intake Disc, Compressor
9		Fasteners
10		Connecting Rod Assembly
11		Instructions, Compressor Rebuild Kit (not shown)

ITEM	PART#	DESCRIPTION
	980666K	COMPRESSOR DIAPHRAGM KIT Kit Contains:
2		Diaphragm, Compressor
5		Loctite®, 242 (0.5 ml Tube)
6		Loctite®, 271 (0.5 ml Tube)
12		Instructions, Compressor Diaphragm Kit (not shown)

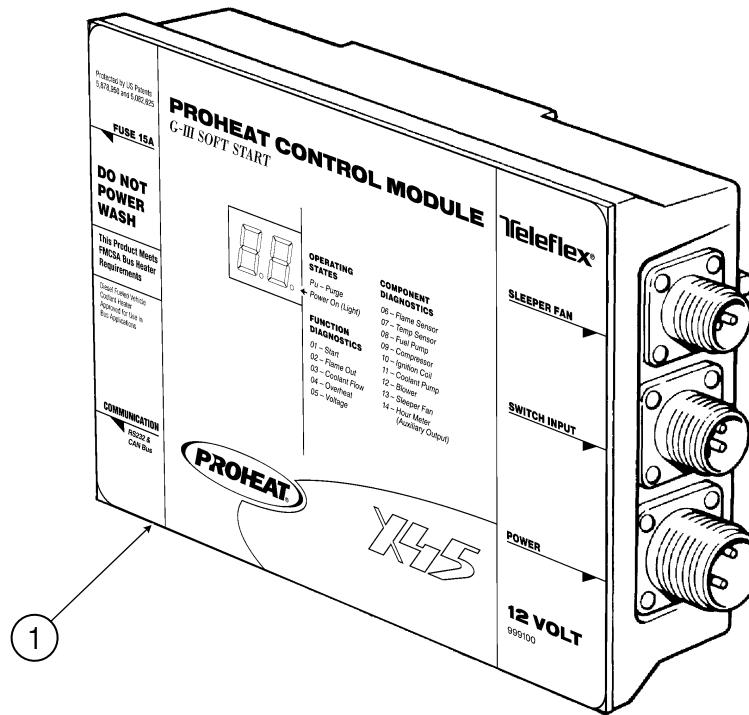


Figure 7.

ITEM	PART#	DESCRIPTION
1	999100K	PCM, Standard, 12 Volt Note: Used in all X45-12 volt systems (except Transit). Includes sleeper fan output connector.
1	999200K	PCM, Auxiliary Input, 12 Volt Note: Transit/Coach applications. Includes auxiliary-input connector for optional preheat and supplemental heat.
1	999400K	PCM, Auxiliary Input, 24 Volt Note: Used in all 24 volt applications. Includes auxiliary-input connector for optional preheat and supplemental heat.
1	999300K	PCM, Auxiliary Input, 12 Volt Note: School bus applications. Includes auxiliary-input connector for optional preheat and supplemental heat.
1	999800K	PCM, Auxiliary Input, 24 Volt MCI Custom Note: MCI Coach applications only. Includes auxiliary-input connector for optional preheat and supplemental heat.

APPLICATION	X45 12V	X45 24V
Trucks with or without Sleeper Kit	999100K	N/A
Transit or Coach	999200K	999400K
School Bus	999300K	999400K
Heavy Equipment	999200K	999400K
Coach MCI Custom	N/A	999800K

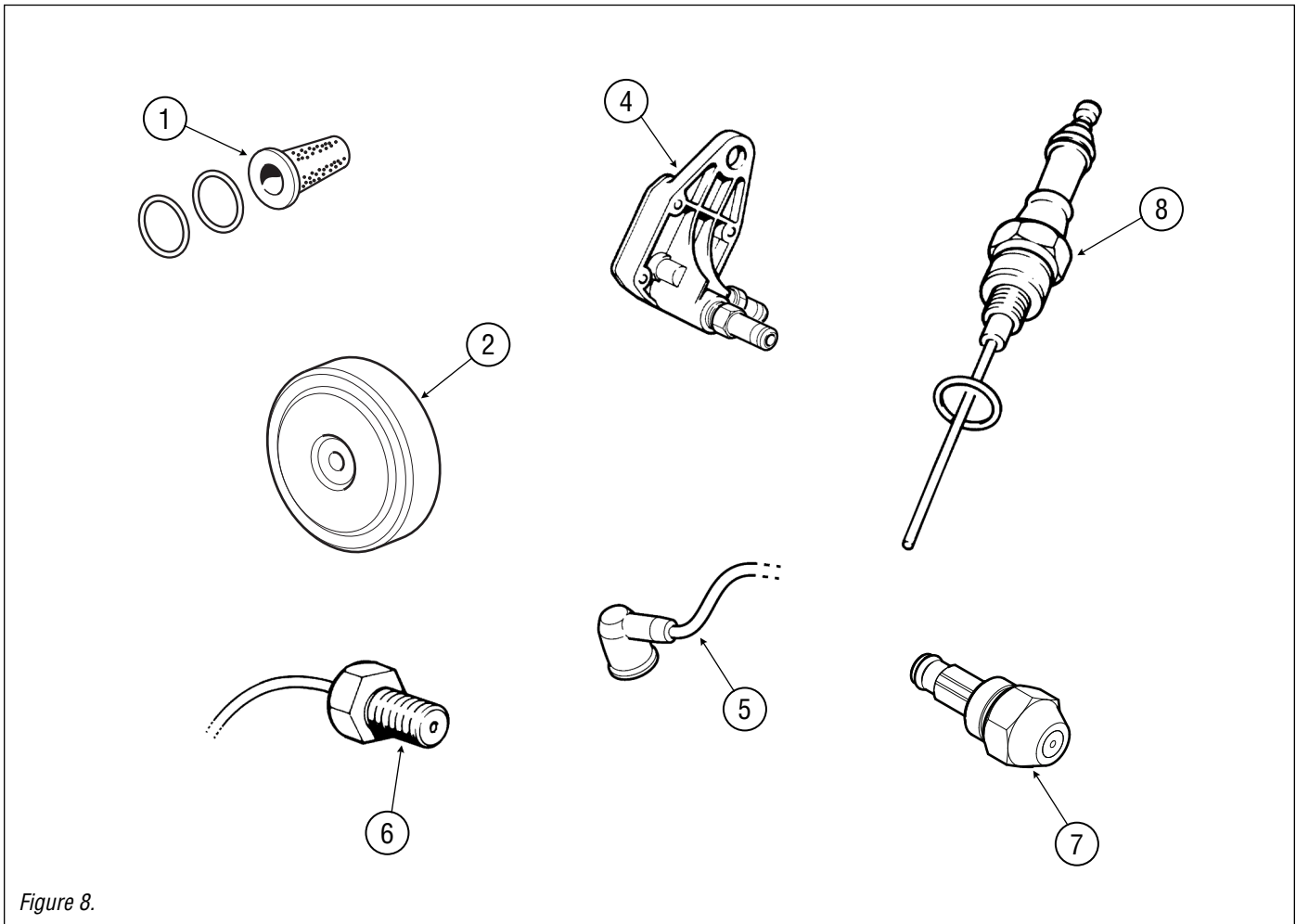


Figure 8.

ITEM	PART#	DESCRIPTION
	PK0094	X45 FALL TUNE-UP KIT
		Kit Contains:
1	880035K	Filter, Fuel c/w 2 O-Rings
2	825730K	Filter, Compressor
3	SB0002	Instructions, Fall Tune-up (<i>not shown</i>)

ITEM	PART#	DESCRIPTION
	PK0069	X45 MAJOR SERVICE KIT
		Kit Contains:
1	880035K	Filter, Fuel c/w 2 O-Rings
2	825730K	Filter, Compressor
4	951126K	Regulator, Fuel
5	930523K	Lead, Ignition
6	954329K	Sensor, Flame
7	938326K	Nozzle, Fuel, 30609-32 c/w O-Ring
8	933525K	Igniter, X45 c/w gasket
9	990669	Instructions, X45 Major Service Kit (<i>Not Shown</i>)

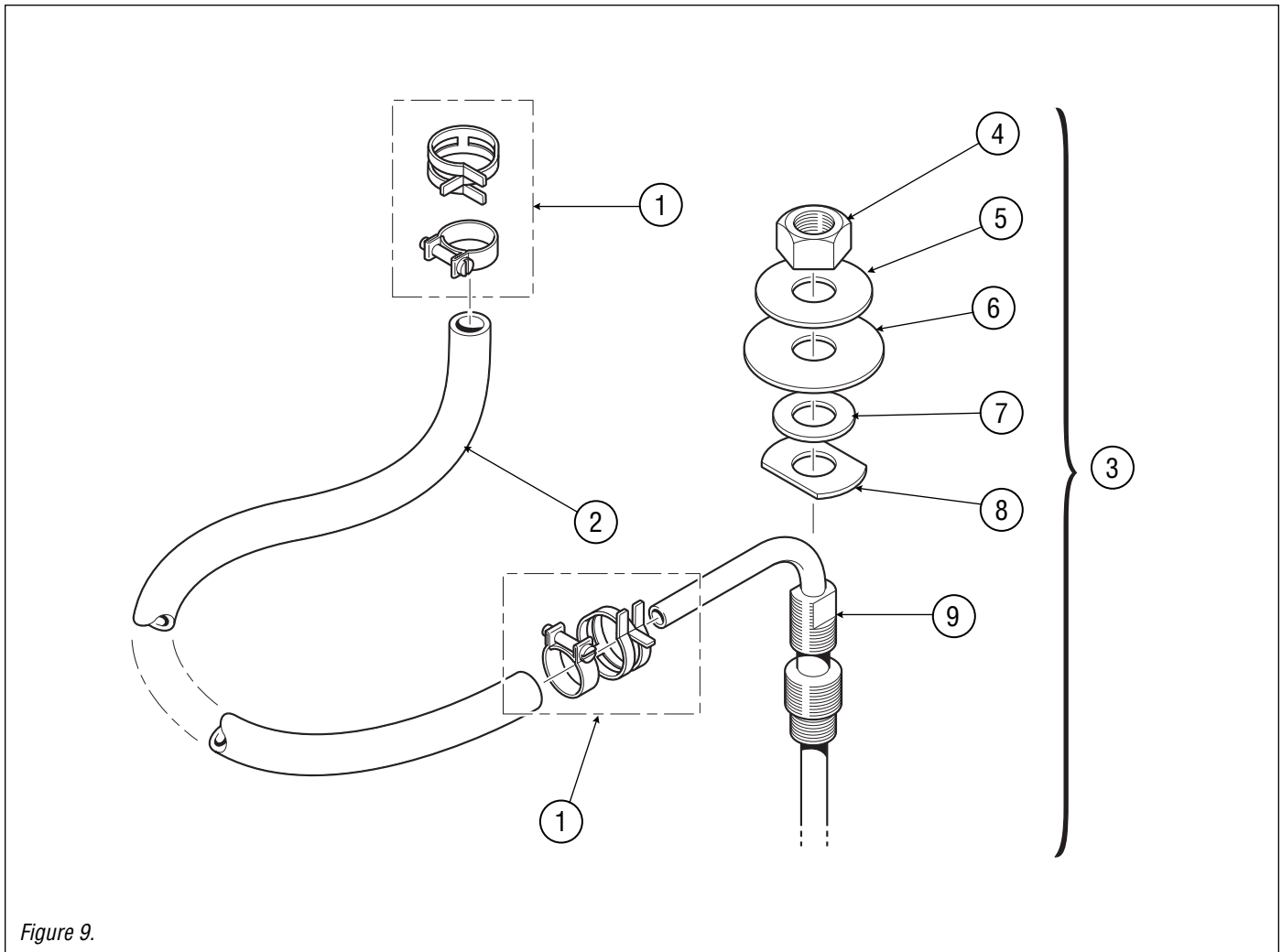


Figure 9.

ITEM	PART#	DESCRIPTION
1	880072K	Clamp, Spring, 1/4" (10/pkg)
	934325K	Clamp, Screw, 3/16" (2/pkg)
Note: 3/16" hose is an obsolete size. Please check your heater to ensure you are ordering the correct part.		
2	842020K	Hose, Air & Fuel, 1/4" ID, per 5ft.

ITEM	PART#	DESCRIPTION
3	841027K	Assembly, Fuel Pick-up, 24" (Standard)
	980624K	Assembly, Fuel Pick-up, 12" (Optional)
	979420K	Assembly, Fuel Pick-up, 36" (Optional)
Assemblies Include:		
4	840626K	Nut, 5/8" NF, (2/pkg)
5	841224K	Washer, Top, (1/pkg)
6	841328K	Gasket, Fuel Pick-Up, (5/pkg)
7	841722K	Washer, 5/8" ID x 1" OD, (2/pkg)
8	841121K	Washer, Bottom, (1/pkg)
9		Fuel Pick-up

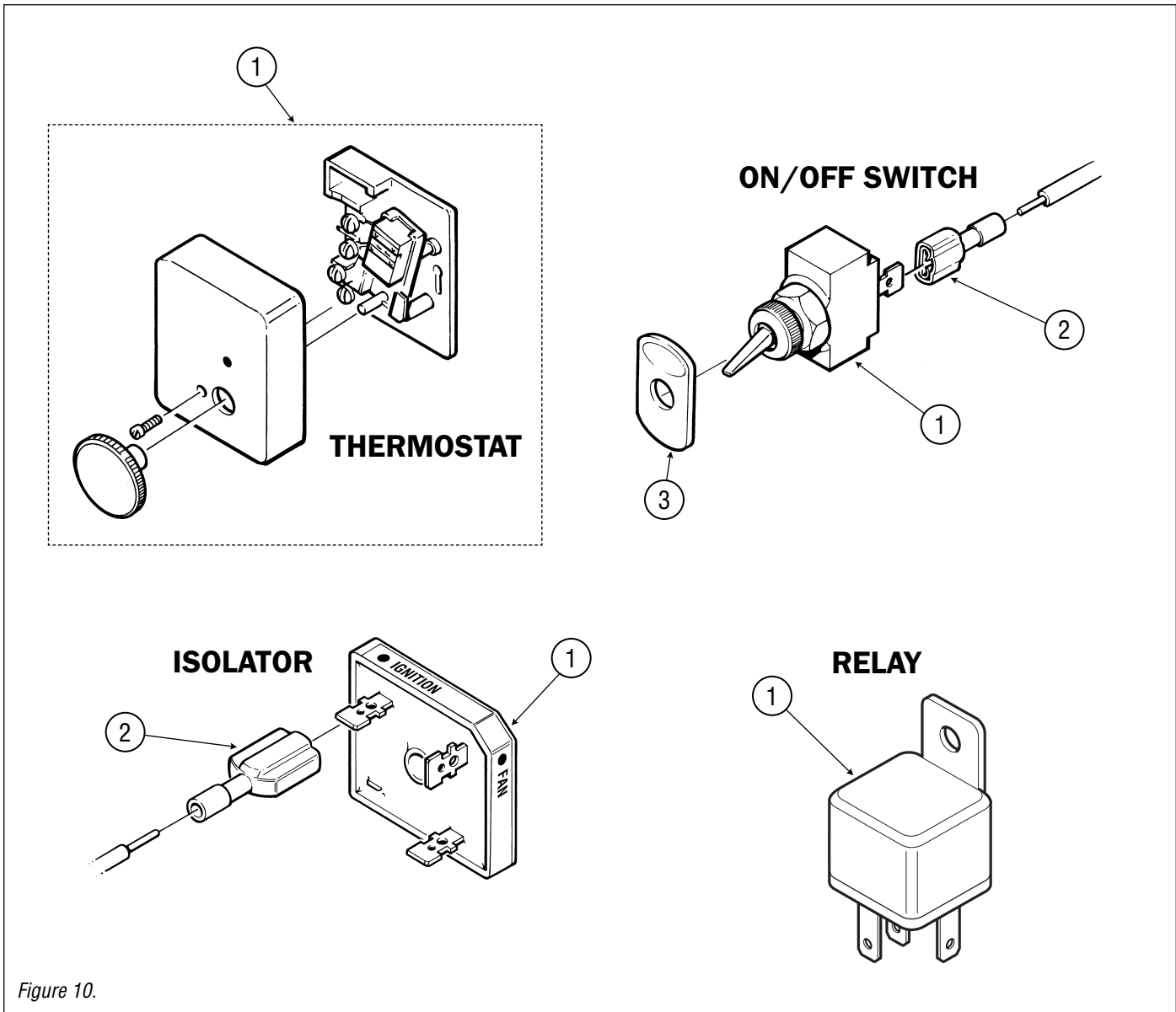


Figure 10.

ITEM	PART#	DESCRIPTION
THERMOSTAT		
1	3822248K	Thermostat
ISOLATOR		
1	844326K	Isolator, Sleeper Fan c/w Decal
2	769125K	Connector, Female Spade, 1/4" (4/pkg)
ON/OFF SWITCH		
1	920125K	Switch, On/Off, 12V
	842725K	Switch, On/Off, 24V
2	769125K	Connector, Female Spade, 1/4" (4/pkg)
3	919626K	Decal, Toggle Switch
RELAY		
1	754929K	Relay, 12V 20A
	755029K	Relay, 24V 20A

ITEM	PART#	DESCRIPTION
	PK0050	SLEEPER CONTROL KIT c/w Thermostat (<i>not shown</i>)
Kit Includes:		
	778853K	Thermostat
	844326K	Isolator, Sleeper Fan c/w Decal
	903026K	Harness, Sleeper Fan, 30', 2 Pin

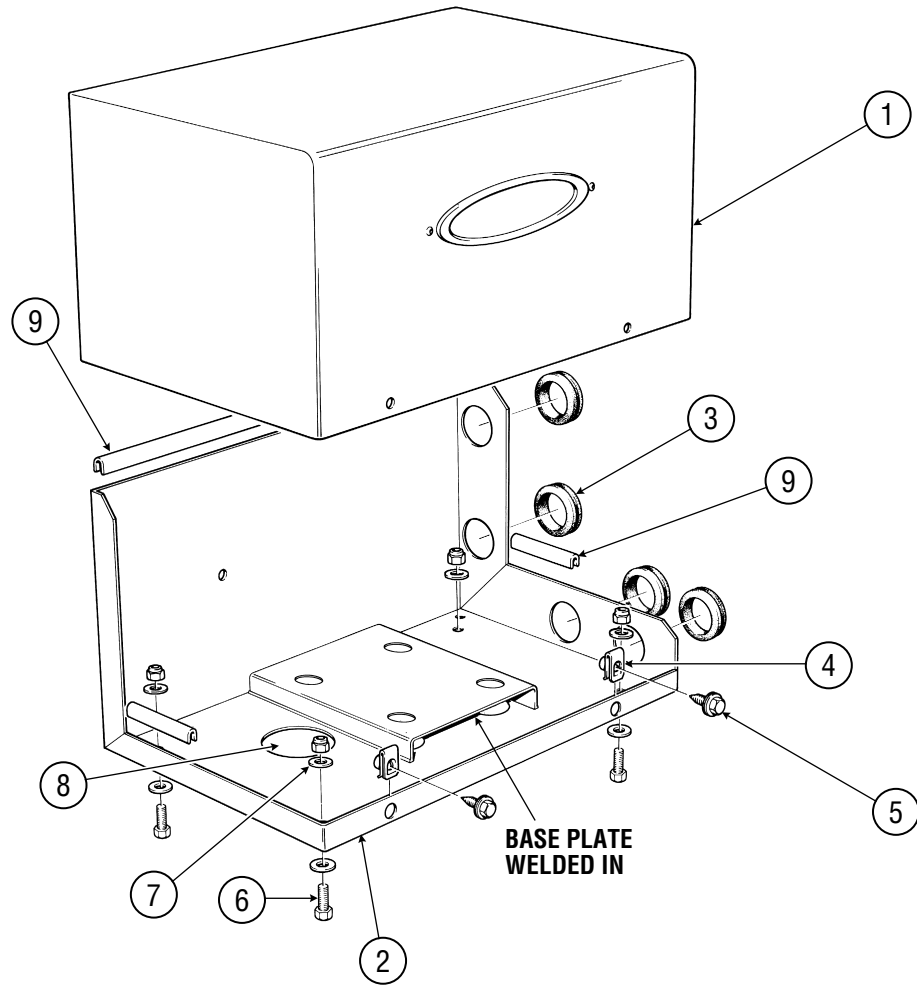


Figure 11.

ITEM	PART#	DESCRIPTION
1	916524K	Enclosure Lid, Diamond Plate c/w Logo
	954422K	Enclosure Lid, Plain c/w Logo
2	844420K	Enclosure, Base <i>This enclosure uses the 2 piece mount only. See Figure 12 on page 12 for 953346K.</i>
3	903929K	Grommet, Enclosure, 1-1/2" ID (4/pkg)
4	929628K	Nut, Panel, Enclosure Base (6/pkg)
5	845422K	Screw, Hex Flange, 5/16" NC x 1" (6/pkg)
6	923829K	Screw, 5/16" NC x 1-1/4" (4/pkg)
7	010924K	Washer, 5/16" (8/pkg)
8	113820K	Nut, Self Locking, 5/16" NC (8/pkg)
9	926921K	Weather Seal, Enclosure, 2.5 ft.

ITEM	PART#	DESCRIPTION
	PK0200	DIAMOND PLATE ENCLOSURE KIT Kit Includes Items 1 to 9 <i>This enclosure uses the 2 piece mount only. See Figure 12 on page 12 for 953346K.</i>
	PK0202	PLAIN ENCLOSURE KIT Kit Includes Items 1 to 9 <i>This enclosure uses the 2 piece mount only. See Figure 12 on page 12 for 953346K.</i>

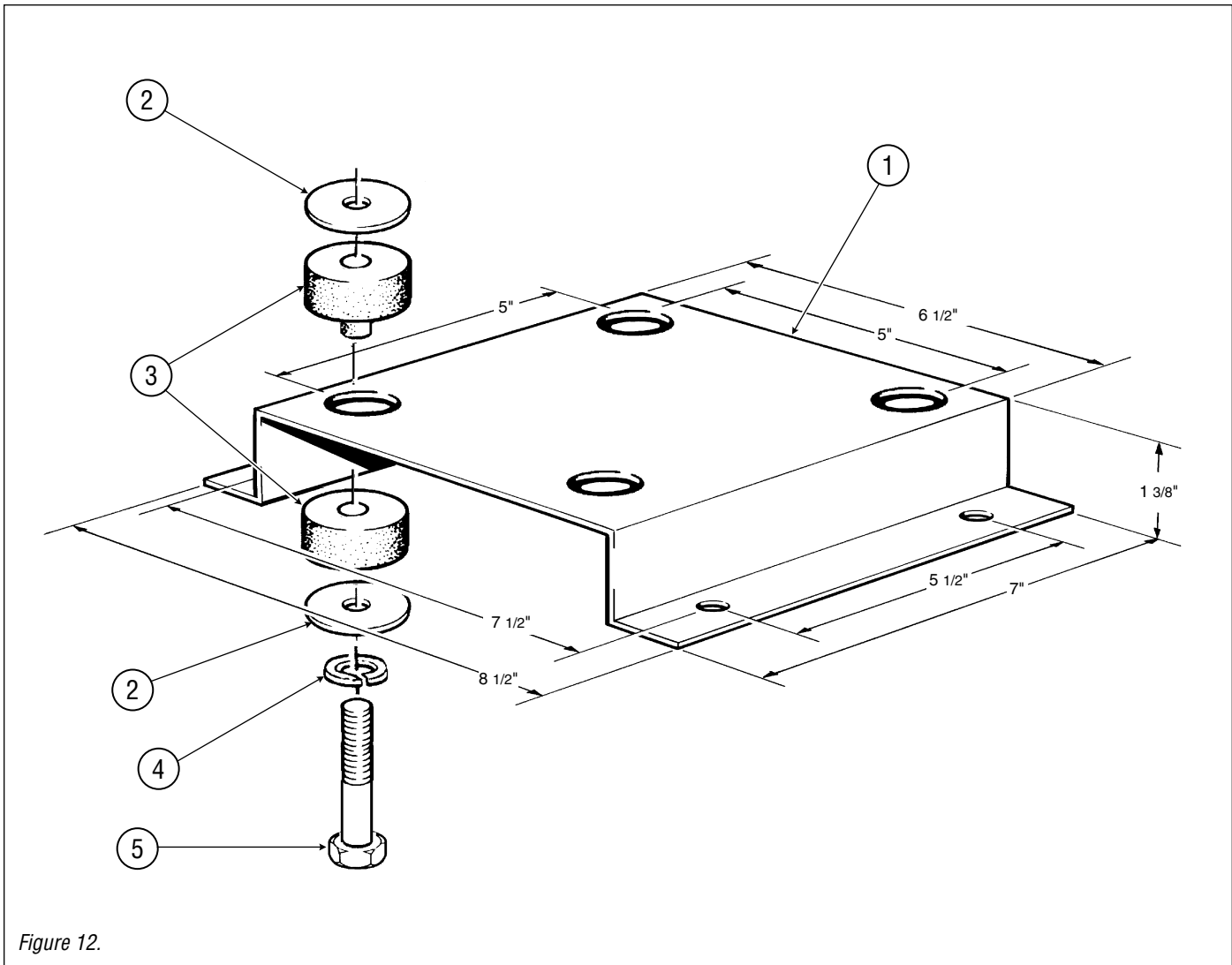


Figure 12.

ITEM	PART#	DESCRIPTION
	953346K	RUBBER MOUNT KIT Kit contains all four mounts, bolts, washers and nuts and fasteners:
2		Washer, Fender, Stainless Steel x 8
3		Isolator, 2 pc. (includes 2 parts) x 4
4		Lockwasher, Fender, 5/16", SS x 4
5		Bolt, 5/16" Zinc Pltd. x 4
	931100K	MOUNT UPGRADE KIT (For old style enclosures made before 1997) Kit contains all four mounts, bolts, washers, nuts and spacers (not shown):
2		Washer, Fender, Stainless Steel x 4
3		Isolator, 2 pc. (includes 2 parts) x 4
4		Lockwasher, Fender, 5/16", SS x 4
5		Bolt, 5/16" Zinc Pltd. x 4 Spacer, Isolator (not shown) x 4

ITEM	PART#	DESCRIPTION
	PK0065	AUXILIARY BASE KIT Kit Contains:
1		Base Mounting Plate x 1 (2 piece Isolator and all four mounts, bolts, washers and nuts.)
2		Washer, Fender, SS x 8
3		Isolator, 2 pc. (includes 2 parts) x 4
4		Lockwasher, Fender, 5/16", SS x 4
5		Bolt, 5/16", Zinc Plated x 4
1	953030K	Base Mounting Plate x 1 (2 piece Isolator)
2	010901K	Washer, Fender, SS x 8 (8/pkg)
4	700721K	Lockwasher, Fender, 5/16" x 4 (4/pkg)
5	790525K	Bolt, 5/16" NC x 1-3/4" (4/pkg)

SIDE FRAME

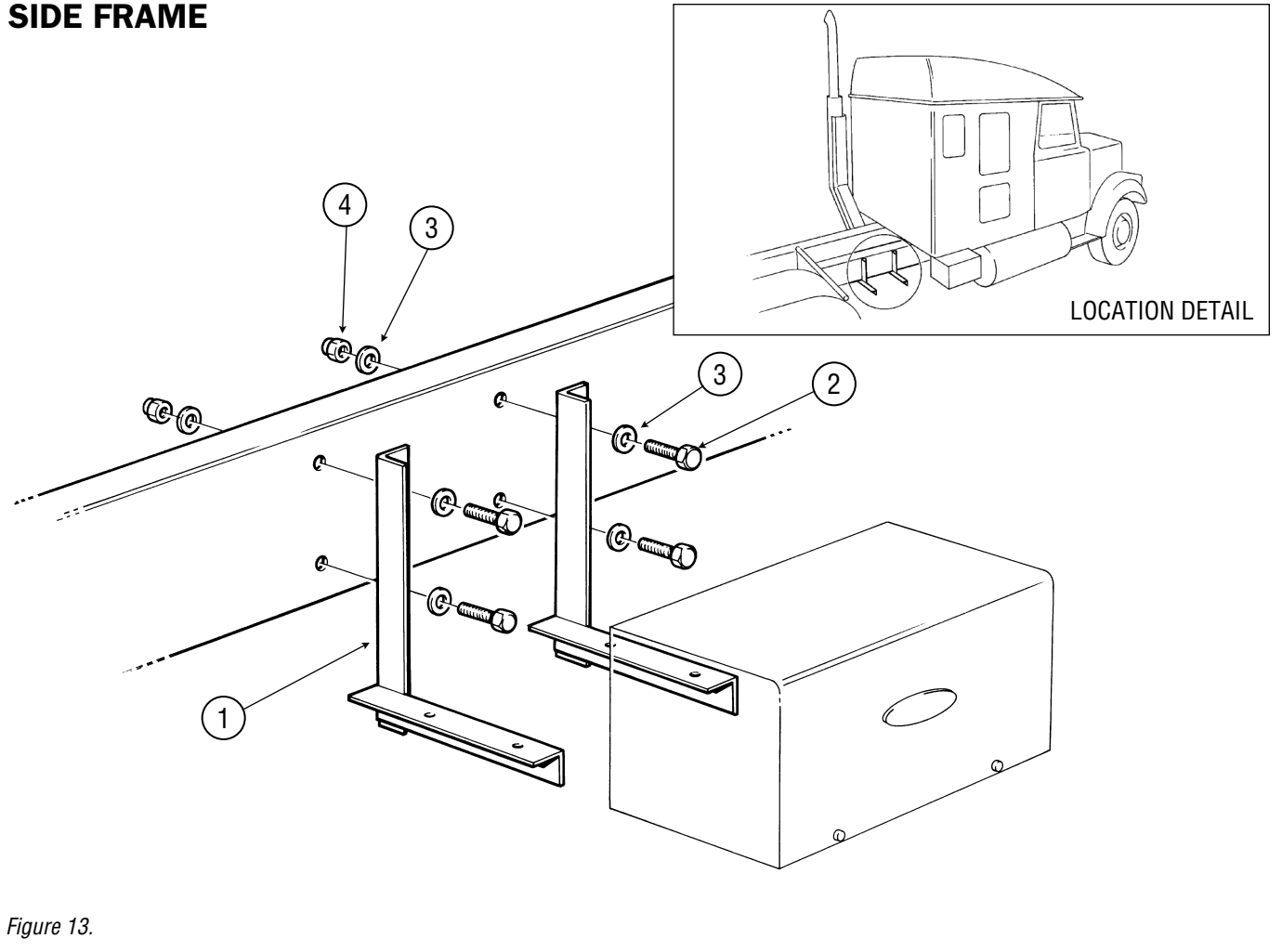


Figure 13.

ITEM	PART#	DESCRIPTION
	PK0152	SIDE FRAME MOUNTING KIT Kit contains brackets, bolts, washers and nuts:
1		Bracket x 2
2		Bolt, 3/8" NC x 1-1/2" Hex HD x 4
3		Washer, 3/8" Flat x 8
4		Nut, Self Locking, 3/8" NC x 4

ITEM	PART#	QTY	DESCRIPTION

ACROSS FRAME

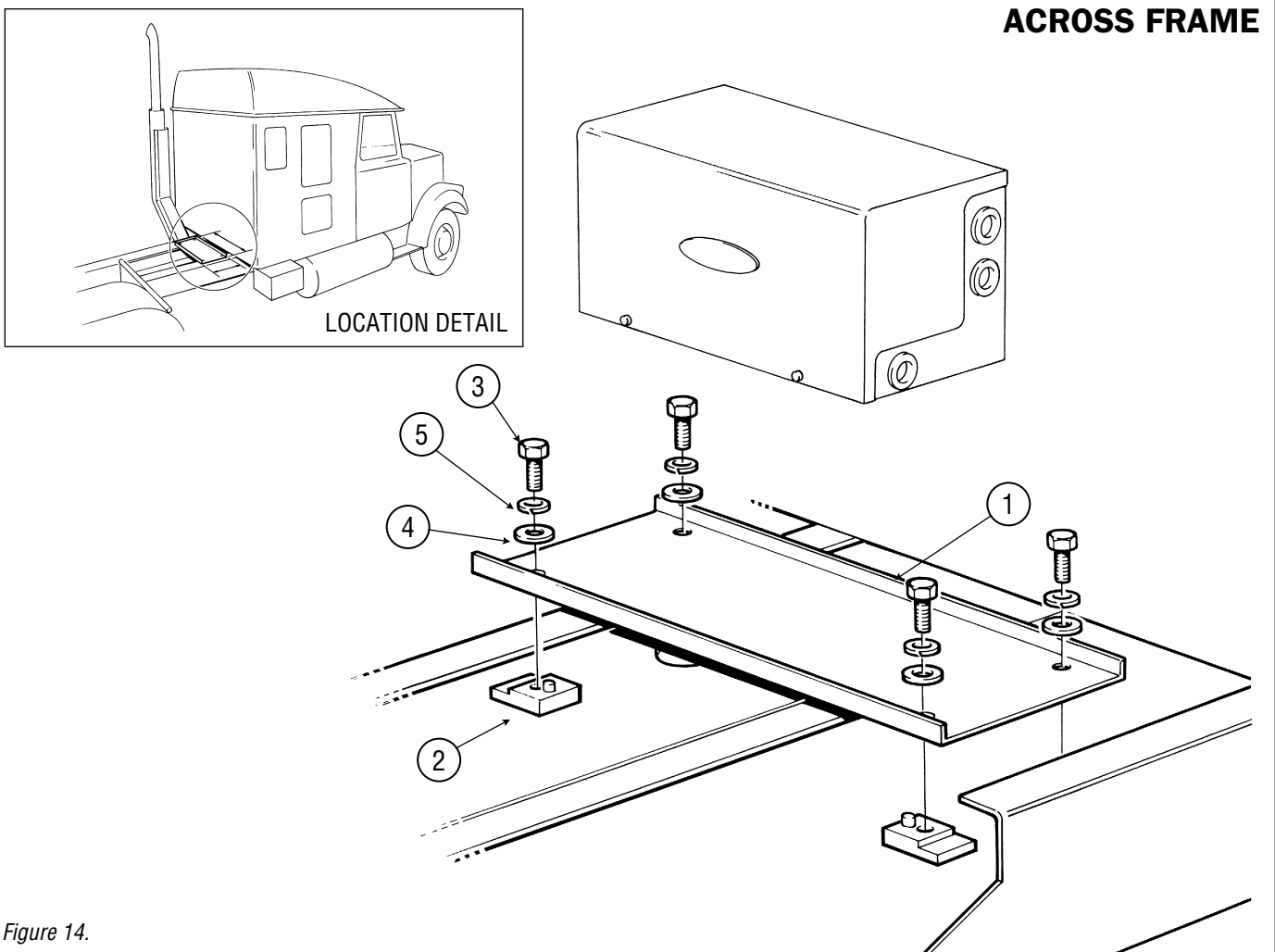


Figure 14.

ITEM	PART#	DESCRIPTION
	PK0151	ACROSS FRAME MOUNTING KIT Kit contains tray, clamps, bolts, and washers:
1		Tray x 1
2		Block Clamp x 4
3		Bolt, 3/8" NC x 1" Hex HD x 4
4		Washer, 3/8" (per assembly) x 4
5		Lockwasher, 3/8" x 4

ITEM	PART#	QTY	DESCRIPTION
------	-------	-----	-------------

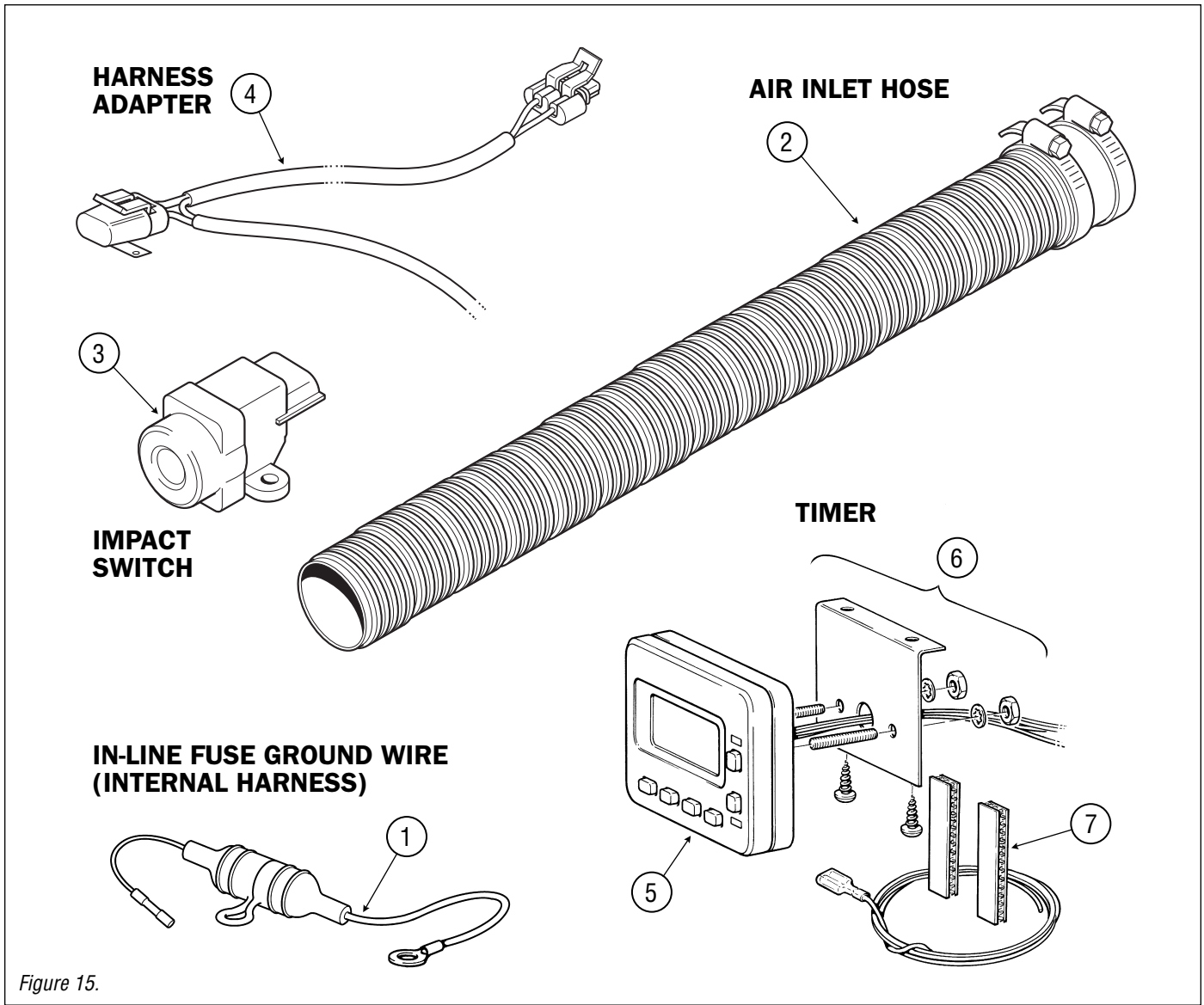


Figure 15.

ITEM	PART#	DESCRIPTION
		IN-LINE FUSE GROUND WIRE
1	PK0310	Ground Wire, In-line Fuse
		AIR INLET HOSE
2	PK0320	Hose, Air Inlet, 2 ft.
		IMPACT SWITCH
3	PK0055	Impact Switch
		HARNESS ADAPTER
4	944026K	Harness, Adapter for Alternate Coolant Pump

ITEM	PART#	DESCRIPTION
		TIMER
5	PK0001-1	T-II Timer, 7-day Digital c/w Installation Kit
		INSTALLATION KIT, TIMER
6	961125K	Kit contains bracket, velcro, wire, screws, studs, nuts and washers: Washer, #8 x 2 Nut, Hex #8-32 x 2 Bracket, Mounting x 1 Screw, Self Tapping, #8 x 1/2" x 2 Stud, Skt. Hd., #8-32 x 1" x 2 Velcro, Duallock x 4 Wire, Backlight c/w Connector x 1
7	939225K	Velcro, Duallock

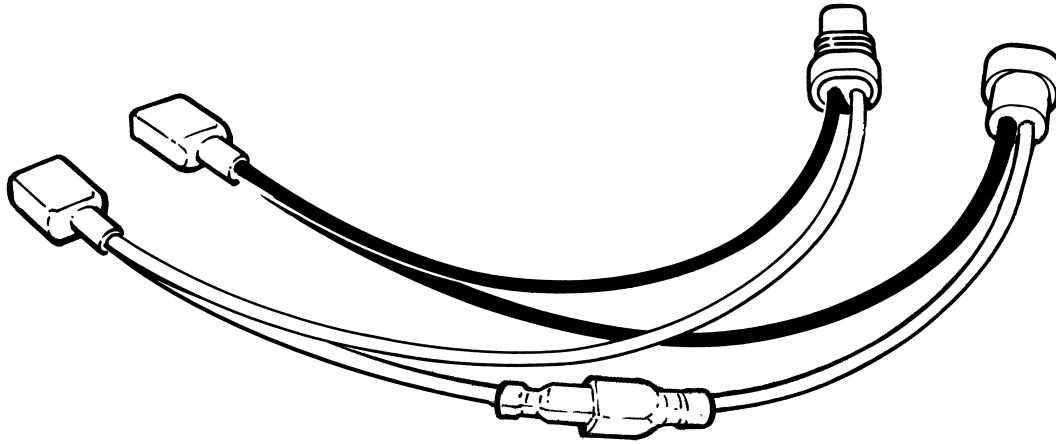


Figure 16.

ITEM	PART#	DESCRIPTION
	967921K	TEST LEAD, MAIN HARNESS This lead allows the user to: <ul style="list-style-type: none"> • apply power to components from a remote source • check the internal resistance of components • check component voltages using a multimeter • check components amperage using a multimeter

ITEM	PART#	DESCRIPTION

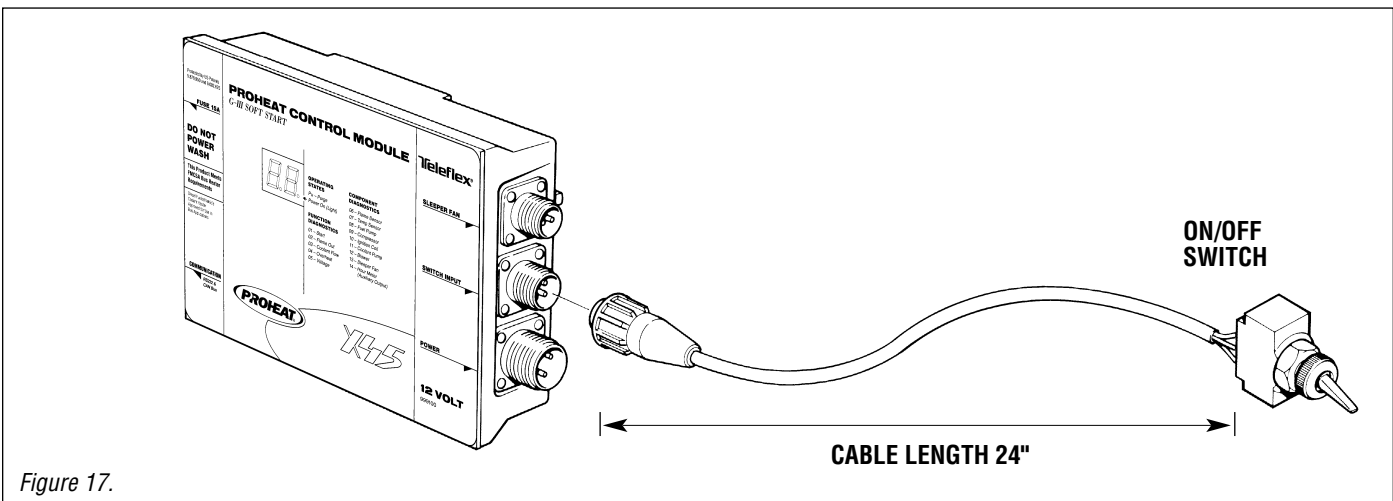
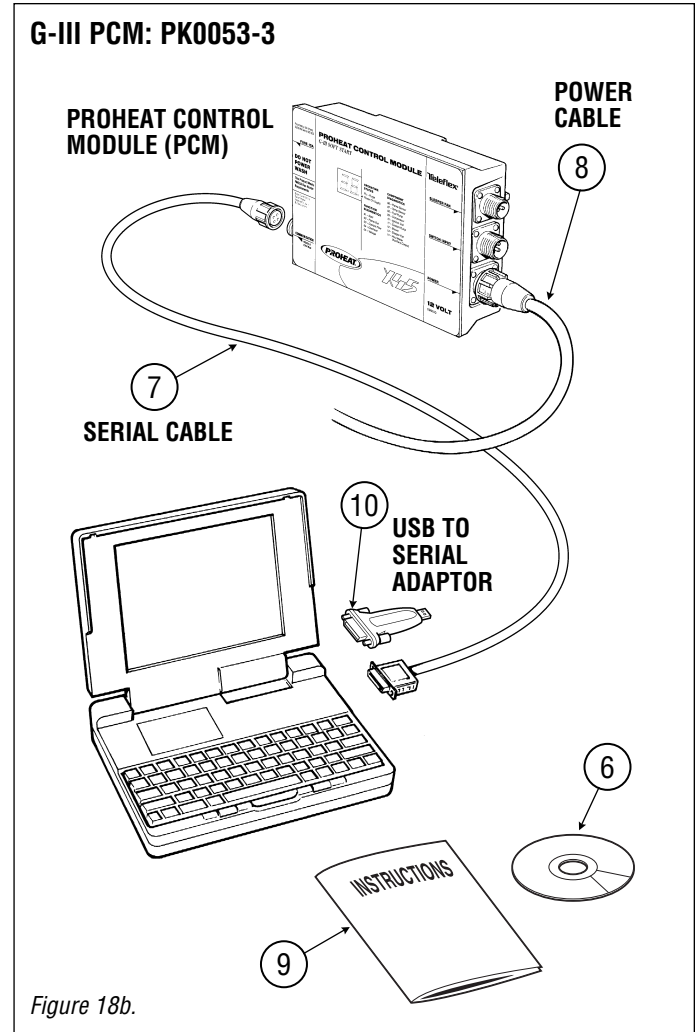
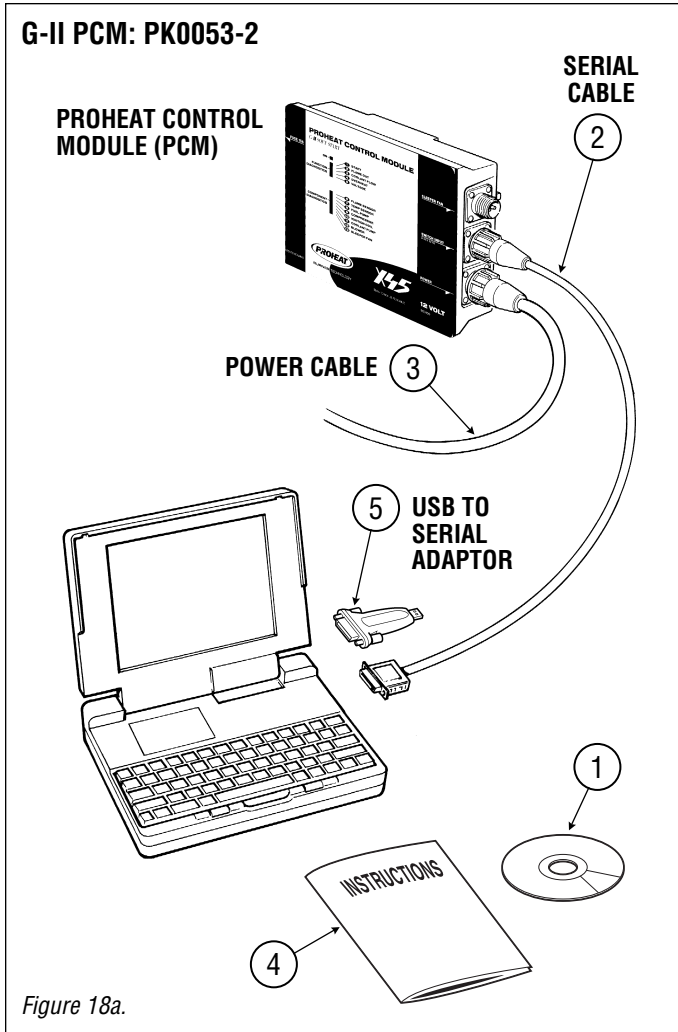


Figure 17.

ITEM	PART#	DESCRIPTION
	952925K	REMOTE ON/OFF SWITCH LEAD This switch lead allows the user to switch the Proheat ON & OFF at the PCM.

ITEM	PART#	DESCRIPTION



ITEM	PART#	DESCRIPTION
	PK0053-2	PROHEAT G-II DATA LINK <i>G-II PCM can be identified by looking at the PCM in Figure 18a above.</i> Allows the user to download information stored in the PCM into a computer for viewing. The information can be used to: a) determine the number of hours the heater has run b) aid in troubleshooting
1	200974K	Kit Contains: Software, Data Link – CD x 1 <i>Available online at www.proheat.com</i>
2		Serial Cable – Connects Computer to Controller (25' long) x 1
3		Power Cable (15' long) x 1
4		Instructions x 1
5		USB to Serial x 1
		Not included: Computer: IBM Compatible with Serial Port

ITEM	PART#	DESCRIPTION
	PK0053-3	PROHEAT G-III DATA LINK <i>G-III PCM can be identified by looking at the PCM in Figure 18b above.</i> Allows the user to download information stored in the PCM into a computer for viewing. The information can be used to: a) determine the number of hours the heater has run b) aid in troubleshooting
6	200976K	Kit Contains: Software, Data Link – CD x 1 <i>Available online at www.proheat.com</i>
7		Serial Cable – Connects Computer to Controller (25' long) x 1
8		Power Cable (15' long) x 1
9		Instructions x 1
10		USB to Serial x 1
		Not included: Computer: IBM Compatible with Serial Port

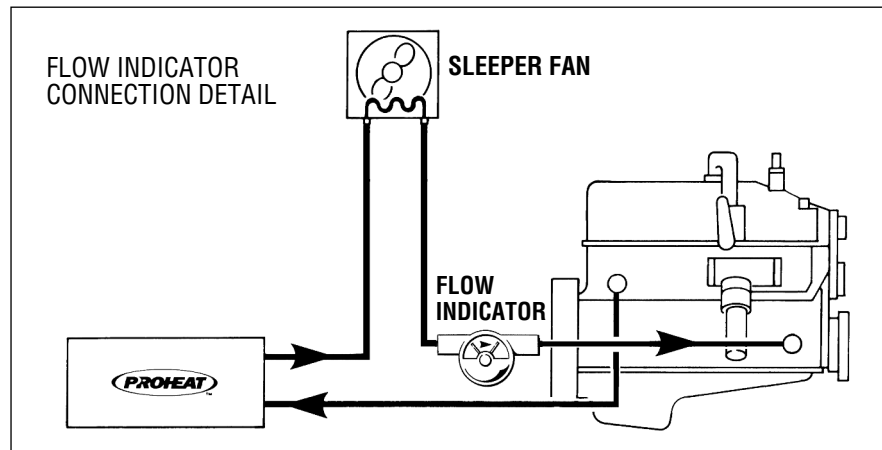
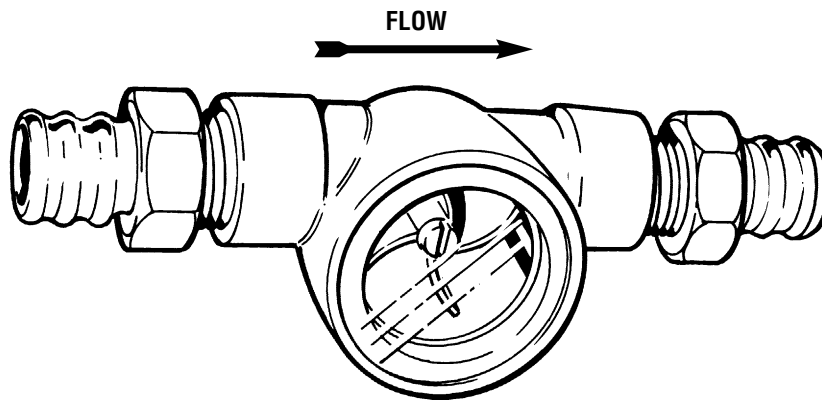


Figure 19.

ITEM	PART#	DESCRIPTION
	TK9002	<p>FLOW INDICATOR</p> <p>Allows the user to determine:</p> <ul style="list-style-type: none"> • direction of flow • speed of flow • air (if any in the coolant system)

ITEM	PART#	DESCRIPTION

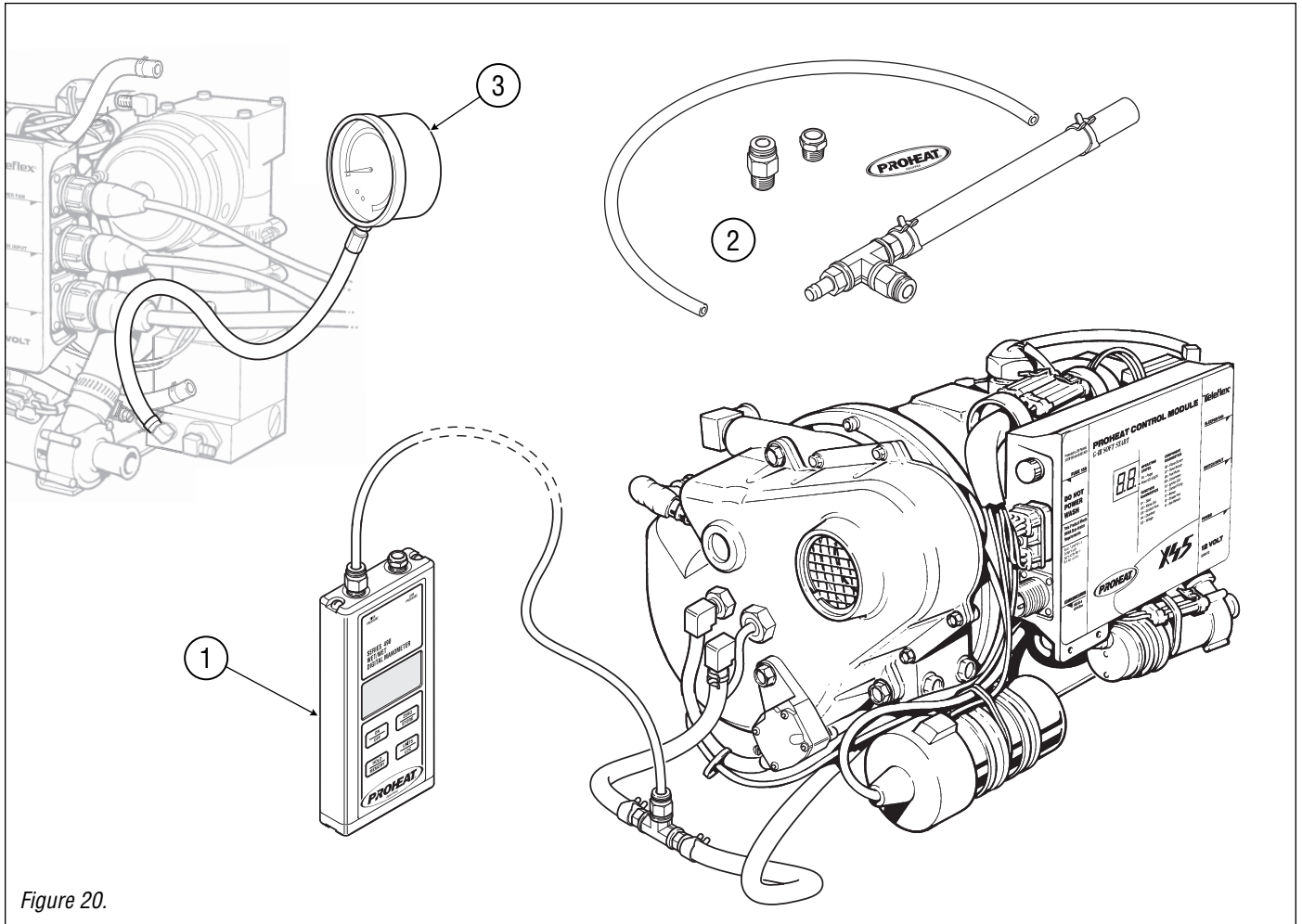


Figure 20.

ITEM	PART#	DESCRIPTION
1	PK0037	TEST GAUGE, AIR PRESSURE, DIGITAL MANOMETER This tool is used to check for proper air/fuel delivery through the nozzle.
2	980037K	Replacement fitting kit for PK0037
3	PK0060	TEST GAUGE, FUEL PRESSURE (Can also be used for air pressure measurement)

ITEM	PART#	DESCRIPTION
------	-------	-------------

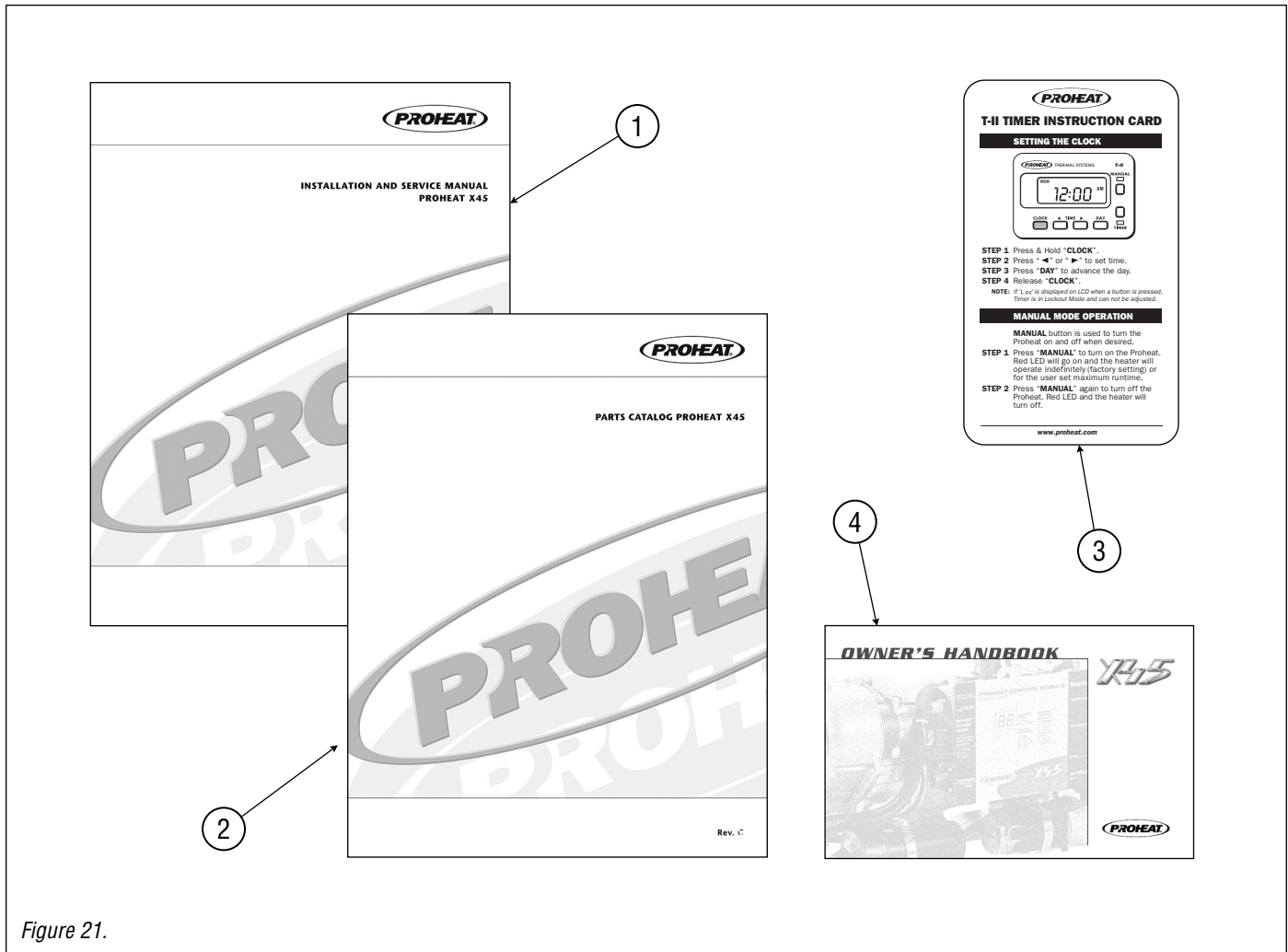


Figure 21.

ITEM	PART#	DESCRIPTION
1	925830	Installation and Service Manual
2	SL9070	Parts Catalog
3	SL9035-1	T-II Timer Instruction Card
4	925851	Owner's Handbook

ITEM	PART#	DESCRIPTION
------	-------	-------------



NUMERIC PARTS INDEX

PART#	DESCRIPTION	PAGE#	PART#	DESCRIPTION	PAGE#
010901K	Washer, Fender, SS x 8 (8/pkg).....	12	880072K	Clamp, Spring, 1/4" (10/pkg).....	1
010924K	Washer, 5/16" (8/pkg).....	11	880072K	Clamp, Spring, 1/4" (10/pkg).....	9
014427K	O-Ring, Fuel Fitting.....	4	900001K	Fuse Holder Replacement Kit.....	3
014925K	O-Ring, Fuel Filter (2/pkg).....	4	900316K	Fan Blade c/w Glue.....	1
020625K	Lockwasher, #10, SS (10/pkg).....	2, 4	901021K	Sensor, Overheat c/w O Ring.....	3
029526K	Lockwasher, 1/4", SS (10/pkg).....	1, 4	901124K	Sensor, Temperature c/w O-Ring.....	3
029526K	Lockwasher, 1/4", SS (10/pkg).....	2	903026K	Harness, Sleeper Fan, 30', 2 Pin.....	3, 10
113820K	Nut, Self Locking, 5/16" NC (8/pkg).....	11	903120K	Harness, Switch, 25', 4 Pin.....	3
200974K	Software, Data Link – CD x 1.....	17	903223K	Harness, Power, 16', 3 Pin.....	3
200976K	Software, Data Link – CD x 1.....	17	903224K	Harness, Power, 32', 3 Pin.....	3
212476K	Bracket, Compressor / Fuel Pump.....	4	903628K	Screw, Hex Flange, 1/4" NC x 5/8" (12/pkg).....	1, 2, 3, 4
221442K	O-Ring, Nozzle.....	1	903929K	Grommet, Enclosure, 1-1/2" ID (4/pkg).....	11
225527K	O-Ring, Heat Exchanger.....	2	904921K	Elbow, 3/4" Hose x 1/2" NPT.....	2
254261K	Washer, Sealing, 685-002 (2/pkg).....	4	905229K	Grommet, Controller Mount (3/pkg).....	3
285725K	Fitting, SAE 45° Flare Male – 1/8" Male NPT Elbow.....	4	905821K	O-Ring, Temperature Sensor.....	3
331539K	Clamp, Gear #36 (1/pkg).....	4	909521K	Clamp, Exhaust Pipe.....	2
334423K	Clamp, Gear, #32.....	2, 4	913526K	Coil, Ignition.....	2
3822248K	Thermostat.....	10	916524K	Enclosure Lid, Diamond Plate c/w Logo.....	11
700721K	Lockwasher, Fender, 5/16" x 4 (4/pkg).....	12	917724K	O-Ring, Overheat.....	3
754929K	Relay, 12V 20A.....	10	919626K	Decal, Toggle Switch.....	10
755029K	Relay, 24V 20A.....	10	920125K	Switch, On/Off, 12V.....	10
769125K	Connector, Female Spade, 1/4" (4/pkg).....	10	921823K	Fuse, 15A (3/pkg).....	3
778853K	Thermostat.....	10	922224K	Screw, 1/4" NC x 1/2" (2/pkg).....	4
790525K	Bolt, 5/16" NC x 1-3/4" (4/pkg).....	12	922525K	Screw, 1/4" NC x 7/8" SS (4/pkg).....	1, 2
825730K	Filter, Compressor.....	4, 8	922680K	Screw, #10-24 x 2 1/2", SS (2/pkg).....	4
840429K	Clamp Spring, Air Green 3/16".....	1	923829K	Screw, 5/16" NC x 1-1/4" (4/pkg).....	11
840626K	Nut, 5/8" NF, (2/pkg).....	9	925830	Installation and Service Manual.....	20
841027K	Assembly, Fuel Pick-up, 24" (Standard).....	9	925851	Owner's Handbook.....	20
841121K	Washer, Bottom, (1/pkg).....	9	926921K	Weather Seal, Enclosure, 2.5 ft.....	11
841224K	Washer, Top, (1/pkg).....	9	929628K	Nut, Panel, Enclosure Base (6/pkg).....	11
841328K	Gasket, Fuel Pick-Up, (5/pkg).....	9	930523K	Lead, Ignition.....	1, 8
841722K	Washer, 5/8" ID x 1" OD, (2/pkg).....	9	930812K	Compressor, 12V.....	4
842020K	Hose, Air & Fuel, 1/4" ID, per 5ft.....	1, 9	930824K	Compressor, 24V.....	4
842123K	Elbow, 3/8" Hose x 1/8" NPT, Air & Fuel ...	1, 4	931100K	Mount Upgrade Kit.....	12
842528K	Spacer, Controller (3/pkg).....	3	931325K	Cover, Connector, CANbus/RS232.....	3
842725K	Switch, On/Off, 24V.....	10	931327K	Cap, Vinyl.....	3
844222K	Combustion Tube, X45.....	2	932100K	Fan End Casting (sub).....	1
844326K	Isolator, Sleeper Fan c/w Decal.....	10	933525K	Igniter, X45 c/w Gasket.....	1, 8
844326K	Isolator, Sleeper Fan c/w Decal.....	10	934325K	Clamp, Screw, 3/16" (2/pkg).....	1, 9
844420K	Enclosure, Base.....	11	934429K	Screw, 10-24 NC x 5/8" Hex HD (4/pkg)....	1, 3
844721K	Sight Glass Assy Kit.....	1	934500K	Harness, Main Internal, 12V.....	3
845028K	Exhaust Pipe, Straight, 10".....	2	934520K	Harness, Main, 24V c/w Ground Fuse.....	3
845422K	Screw, Hex Flange, 5/16" NC x 1" (6/pkg) ...	11	934522K	Heat Exchanger c/w Elbows.....	2
850113K	Bracket, "J" c/w Clamp.....	2, 4	934626K	Clip, Wire Harness (2/pkg).....	3
850217K	Fitting, -4 JIC Male – 1/8" Male NPT Elbow....	4	936725K	Clamp, Cushioned 3/8" ID.....	2
859165K	Fitting, -4 JIC-M x 1/8 NPT-M STL.....	4	938326K	Nozzle, Fuel, 30609-32 c/w O-Ring.....	1, 8
865893K	Coolant Pump Rebuild Kit.....	5	938928K	Nut, Nylon, 1/4" NC Jam (6/pkg).....	2
880015K	Fitting, Filter Cap c/w O-Ring.....	4	939225K	Velcro, Dualock.....	15
880035K	Filter, Fuel c/w 2 O-Rings.....	4, 8	940326K	Coolant Pump, 12 Volt.....	4

NUMERIC PARTS INDEX



PART#	DESCRIPTION	PAGE#	PART#	DESCRIPTION	PAGE#
940732K	Coupling (2/pkg).....	4	PK0151	Across Frame Mounting Kit.....	14
942820K	Coolant Pump, 24 Volt	4	PK0152	Side Frame Mounting Kit	13
944026K	Harness, Adapter for Alternate Coolant Pump.....	15	PK0200	Diamond Plate Enclosure Kit.....	11
944628K	Harness, Transit, Power 26"	3	PK0202	Plain Enclosure Kit.....	11
950121K	Screw, 1/4"NC x 1/2" SS (4/pkg)	4	PK0310	Ground Wire, In-line Fuse.....	15
951126K	Regulator, Fuel	1, 8	PK0320	Hose, Air Inlet, 2 ft.	15
952925K	Remote ON/OFF Switch Lead.....	16	SB0002	Instructions, Fall Tune-up.....	8
953030K	Base Mounting Plate x 1 (2 piece Isolator) ...	12	SL9035-1	T-II Timer Instruction Card.....	20
953346K	Rubber Mount Kit.....	12	SL9070	Parts Catalog.....	20
953523K	Gasket, Seat, Igniter	1	TK9002	Flow Indicator	18
954329K	Sensor, Flame	1, 8			
954422K	Enclosure Lid, Plain c/w Logo	11			
954685K	Compressor Rebuild Kit.....	6			
961125K	Installation Kit, Timer	15			
961229K	Hose, Coolant, 3/4" ID, 1 ft.	4			
962823K	Clamp, Silicon Hose, #10.....	4, 5			
964321K	Screen, Blower Inlet Kit.....	1			
964424K	Gasket, Blower	1			
967921K	Test Lead, Main Harness	16			
972726K	Coolant Pump Drive Cup w/set screw.....	5			
979420K	Assembly, Fuel Pick-up, 36" (Optional)	9			
980012K	Fuel Pump c/w coupling	4			
980037K	Replacement fitting kit for PK0037.....	19			
980212K	Blower, 12V c/w Gasket & Fan Blade	1			
980224K	Blower, 24V c/w Gasket & Fan Blade	1			
980521K	Exhaust Pipe, 90° Elbow, 24"	2			
980624K	Assembly, Fuel Pick-up, 12" (Optional)	9			
980666K	Compressor Diaphragm Kit.....	6			
981324K	Relief Valve Kit	4			
985524K	Harness, Transit, Switch/AUX 26	3			
986532K	Harness, Switch, 26" ", 4 Pin.....	3			
990669	Instructions, X45 Major Service Kit	8			
999100K	PCM, Standard, 12 Volt.....	7			
999200K	PCM, Auxiliary Input, 12 Volt.....	7			
999300K	PCM, Auxiliary Input, 12 Volt.....	7			
999400K	PCM, Auxiliary Input, 24 Volt.....	7			
999670K	Screw, 10-24 NC x 1/2", Socket SS (4/pkg)...	2			
999800K	PCM, Auxiliary Input, 24 Volt MCI Custom	7			
PK0001-1	T-II Timer, 7-day Digital c/w Installation Kit ...	15			
PK0037	TEST GAUGE, Air Pressure, Digital Manometer	19			
PK0050	Sleeper Control Kit	10			
PK0053-2	Proheat G-II Data Link	17			
PK0053-3	Proheat G-III Data Link	17			
PK0055	Impact Switch.....	15			
PK0060	Test Gauge, Fuel Pressure.....	19			
PK0065	Auxillary Base Kit	12			
PK0069	X45 Major Service Kit	8			
PK0094	X45 Fall Tune-Up Kit	8			



SeaStar Solutions

3831 No.6 Road
Richmond, B.C.
Canada V6V 1P6

Tel: 604-270-6899
Fax: 604-270-7172

www.proheat.com



Designed and Manufactured
in North America



ISO 9001

© 2007 Marine Canada Acquisition Inc. DBA SEASTAR SOLUTIONS

Proheat is a registered trademark of Marine Canada Acquisition Inc.
and its subsidiary companies.

Printed in Canada 03/14 PID# SL9070H